



OVER 60?

Secure this property
for up to **59% less!**

Price

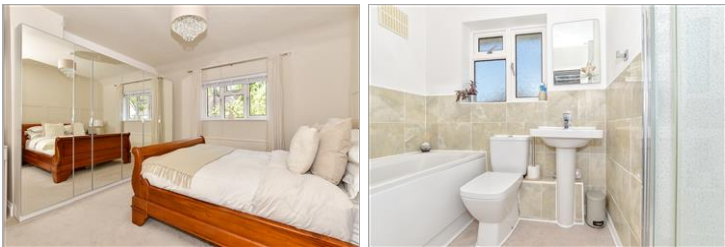
£375,000

Freehold

3x  1x  2x 

**Grange Crescent, St.
Michaels, Tenterden,
Kent, TN30**

Wards
Helping you move forwards



Main features

- Stunning 3 bedroom semi-detached house
- Modern beautifully presented open plan kitchen/diner
- Landscaped low maintenance rear garden
- Garage and off-road parking
- Highly desirable location

Accommodation

GROUND FLOOR

Hallway

Kitchen/Diner: 19'3 x 11'0 (5.87m x 3.36m)

Lounge: 13'1 x 12'8 (3.99m x 3.86m)

FIRST FLOOR

Landing

Bedroom 1: 13'5 x 12'7 (4.09m x 3.84m)

Bedroom 2: 12'8 x 11'7 (3.86m x 3.53m)

Bathroom: 9'3 x 5'10 (2.82m x 1.78m)

Bedroom 3: 9'4 x 6'6 (2.85m x 1.98m)

OUTSIDE

Garage/Utility

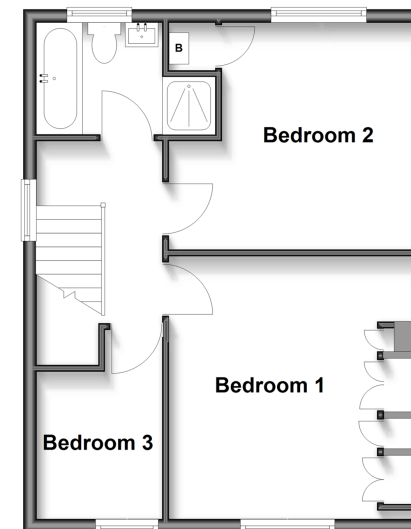
Driveway

Front Garden

Rear Garden

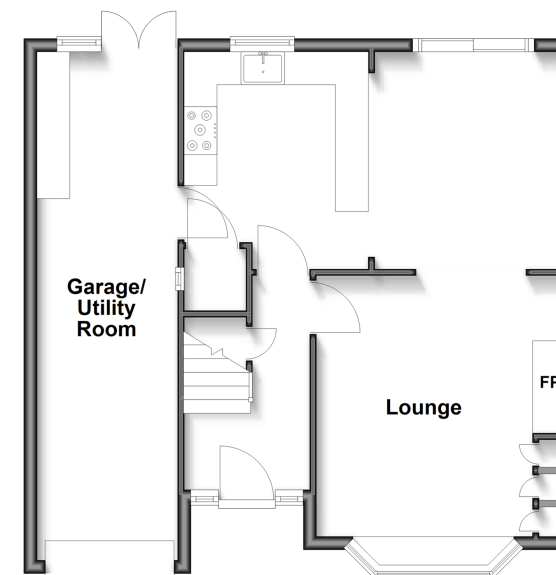
First Floor

Approx. 43.8 sq. metres (471.6 sq. feet)



Ground Floor

Approx. 58.8 sq. metres (633.2 sq. feet)



Call Tenterden - 01580 766002 ■ wardsofkent.co.uk

- Legal advice should be taken to verify fixtures/fittings, planning, alterations and/or lease details
- Appliances & services are untested, dimensions are approximate and floor plans are not to scale
- Through a Homewise Home For Life Plan people aged 60+ can secure this property for up to 59% less, by purchasing a Lifetime Lease.



14008110/20250512/CD/AQ