



Guide Price
£300,000

Freehold

3x  1x  2x 

**Brattle, Woodchurch,
Ashford, Kent, TN26**

OVER 60?

Secure this property
for up to **59% less!**

Wards
Helping you move forwards



Main features

- **Spacious 3 bedroom semi-detached house**
- **Excellent opportunity to renovate and extend subject to planning permission**
- **Generous sunny rear garden**
- **Popular village location**
- **Chain free**

Accommodation

GROUND FLOOR

Entrance Hallway

Dining Room: 11'7 x 10'0 (3.53m x 3.05m)

Lounge

Kitchen: 20'4 x 6'7 (6.20m x 2.01m)

Utility Room: 7'11 x 6'9 (2.41m x 2.06m)

Storage Area: 9'7 x 5'8 (2.92m x 1.73m)

Cloakroom

FIRST FLOOR

Landing

Bedroom 1: 14'1 x 10'2 (4.30m x 3.10m)

Bedroom 2: 11'4 x 9'11 (3.46m x 3.02m)

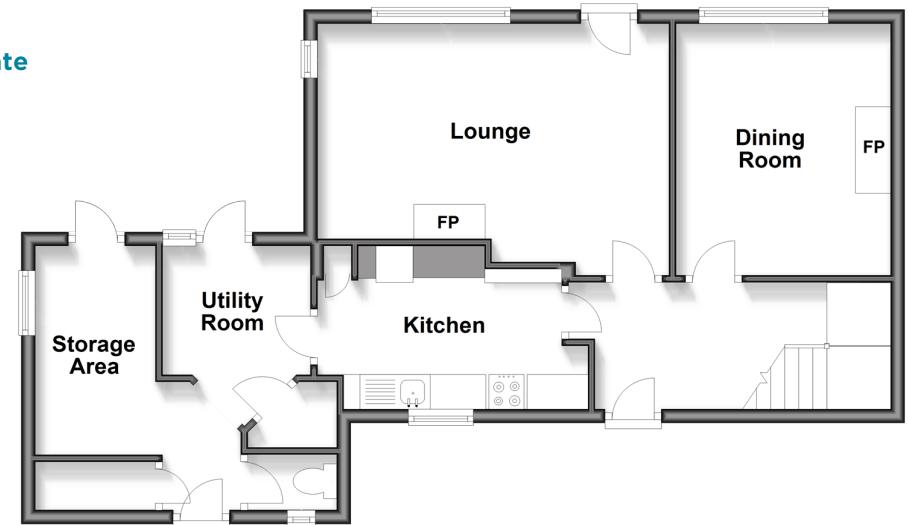
Bathroom: 6'9 x 5'10 (2.06m x 1.78m)

Bedroom 3: 11'5 x 6'5 (3.48m x 1.96m)

OUTSIDE

Rear Garden

Ground Floor
Approx. 61.1 sq. metres (658.1 sq. feet)



First Floor
Approx. 45.4 sq. metres (489.0 sq. feet)



Call Tenterden - 01580 766002 ■ wardsof Kent.co.uk

- Legal advice should be taken to verify fixtures/fittings, planning, alterations and/or lease details
- Appliances & services are untested, dimensions are approximate and floor plans are not to scale
- Through a Homewise Home For Life Plan people aged 60+ can secure this property for up to 59% less, by purchasing a Lifetime Lease.



14007506/20250807/CD/AQ