



Price
£450,000

Freehold

4x  1x  1x 

**Main Street, Peasmarch,
Rye, East Sussex, TN31**

OVER 60?

Secure this property
for up to **59% less!**

Wards
Helping you move forwards



Main features

- **Stunning 4 bedroom Semi-detached house**
- **Exceptional extended Kitchen/Diner**
- **Generous private rear garden**
- **Substantial driveway with parking for multiple vehicles**
- **Highly desirable village location**

Accommodation

GROUND FLOOR

Entrance Hallway

Lounge: 23'2 x 11'2 (7.07m x 3.41m)

Kitchen: 18'9 x 15'10 (5.72m x 4.83m)

Cloakroom

Boot room

Utility/Store Room: 10'2 x 7'11 (3.10m x 2.41m)

FIRST FLOOR

Landing

Bedroom 1: 11'4 x 11'2 (3.46m x 3.41m)

Bedroom 2: 10'9 x 8'1 (3.28m x 2.47m)

Bath/Shower Room: 8'11 x 5'10 (2.72m x 1.78m)

Bedroom 3: 10'4 x 8'3 (3.15m x 2.52m)

Bedroom 4: 9'4 x 9'1 (2.85m x 2.77m)

OUTSIDE

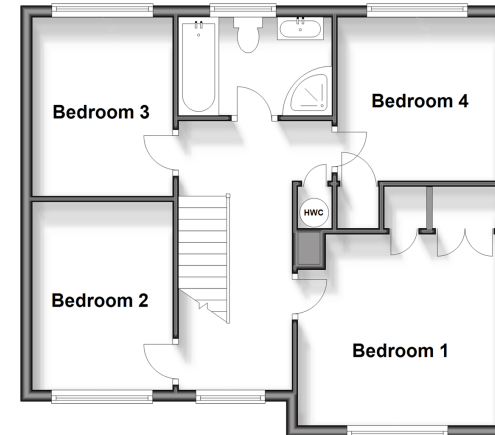
Driveway

Rear Garden

Workshop

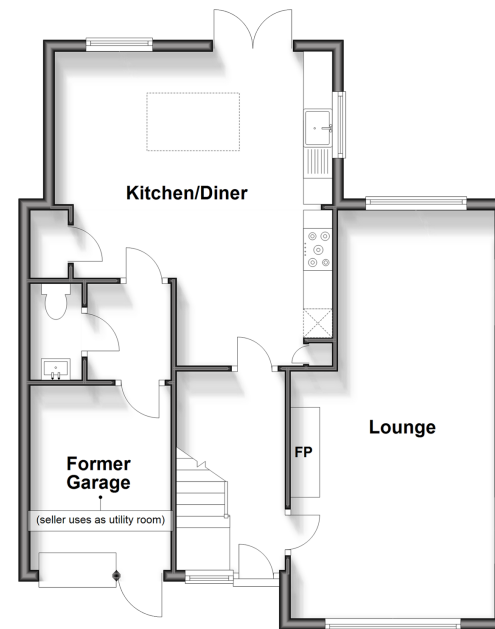
First Floor

Approx. 54.1 sq. metres (582.8 sq. feet)



Ground Floor

Approx. 66.4 sq. metres (714.9 sq. feet)



Call Tenterden - 01580 766002 ■ wardsofkent.co.uk

- Legal advice should be taken to verify fixtures/fittings, planning, alterations and/or lease details
- Appliances & services are untested, dimensions are approximate and floor plans are not to scale
- Through a Homewise Home For Life Plan people aged 60+ can secure this property for up to 59% less, by purchasing a Lifetime Lease.



14008065/20250324/CD/AQ