



**Price**  
**£285,000**

**Freehold**

3x  1x  1x 

**Longfield, Tenterden,  
Kent, TN30**

**OVER 60?**

Secure this property  
for up to **59% less!**

*Wards*  
Helping you move forwards





## Main features

- Very spacious 3 bedroom mid-terraced house
- Sociable kitchen/diner
- Low maintenance rear garden
- Permit parking for residents
- Tenterden town centre location, close to all amenities

## Accommodation

### GROUND FLOOR

Entrance Hall  
Cloakroom  
Kitchen/Diner: 15'9 x 8'10 (4.80m x 2.69m)  
Lounge: 14'3 x 10'0 (4.35m x 3.05m)  
Rear Porch

### FIRST FLOOR

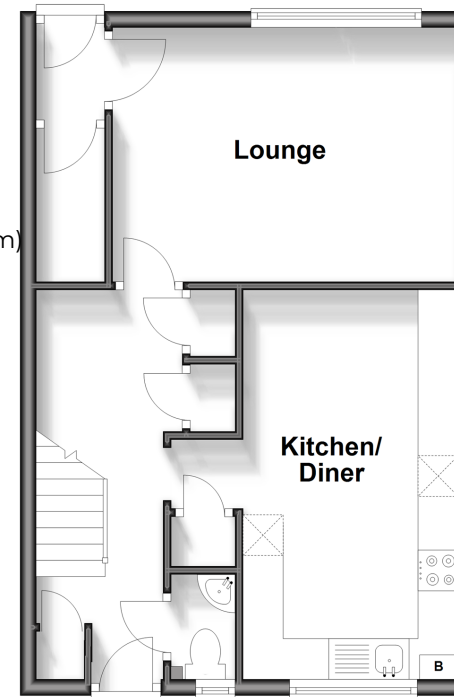
Landing  
Bedroom 3: 10'5 x 8'10 (3.18m x 2.69m)  
Bedroom 1: 13'6 x 8'6 (4.12m x 2.59m)  
Bedroom 2: 13'3 x 8'5 (4.04m x 2.57m)  
Bathroom

### OUTSIDE

Front Court Yard  
Rear Garden

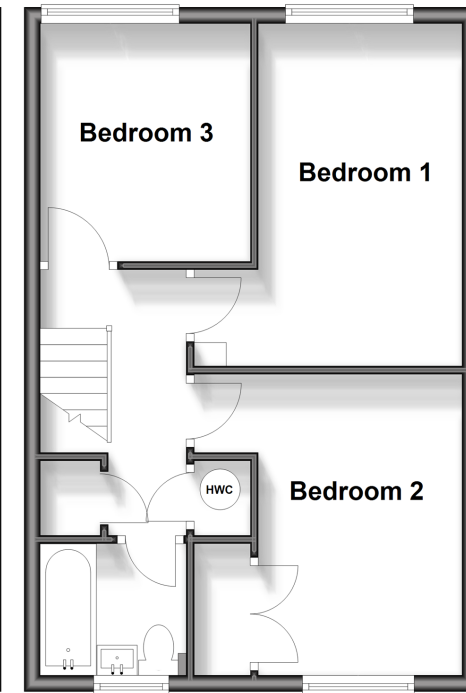
### Ground Floor

Approx. 42.1 sq. metres (453.1 sq. feet)



### First Floor

Approx. 42.1 sq. metres (453.1 sq. feet)



**Call Tenterden - 01580 766002 ■ [wardsofkent.co.uk](http://wardsofkent.co.uk)**

- Legal advice should be taken to verify fixtures/fittings, planning, alterations and/or lease details
- Appliances & services are untested, dimensions are approximate and floor plans are not to scale
- Through a Homewise Home For Life Plan people aged 60+ can secure this property for up to 59% less, by purchasing a Lifetime Lease.



14006051/20250807/CD/AQ