



OVER 60?

Secure this property
for up to **59% less!**

Price

£575,000

Freehold

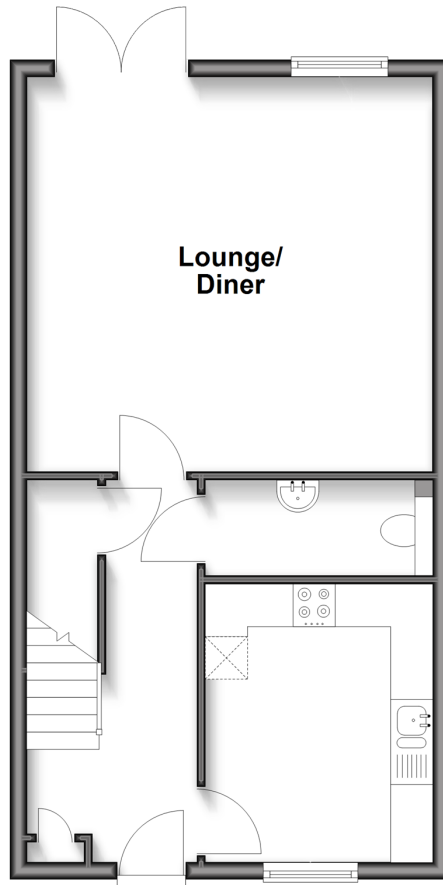
4x  2x  1x 

**Three Fields Road,
Tenterden, Kent, TN30**

Wards
Helping you move forwards

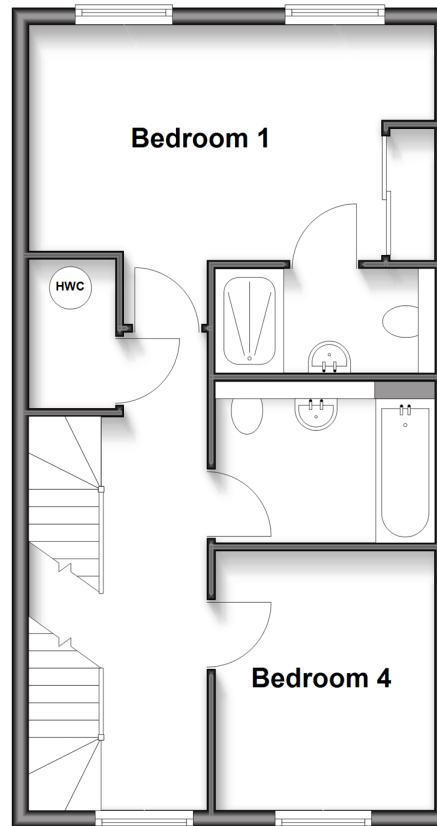
Ground Floor

Approx. 44.6 sq. metres (479.9 sq. feet)



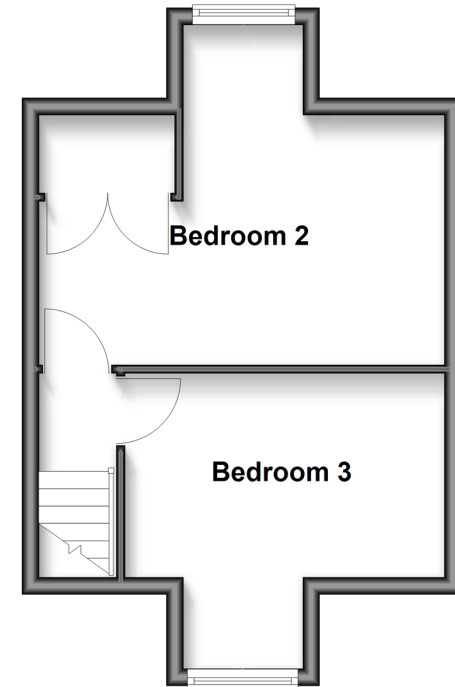
First Floor

Approx. 44.6 sq. metres (479.9 sq. feet)



Second Floor

Approx. 29.3 sq. metres (315.3 sq. feet)



Accommodation

GROUND FLOOR

Entrance Hall
Kitchen: 11'0 x 9'7 (3.36m x 2.92m)
Cloakroom
Lounge/Diner: 15'10 x 15'5 (4.83m x 4.70m)

FIRST FLOOR

Landing
Bedroom 1: 15'11 x 12'3 (4.85m x 3.74m)
En-Suite Shower Room
Family Bathroom: 9'0 x 6'6 (2.75m x 1.98m)
Bedroom 4 : 10'0 x 8'8 (3.05m x 2.64m)

SECOND FLOOR

Landing
Bedroom 2: 15'10 x 13'11 (4.83m x 4.24m)
Bedroom 3: 12'4 x 11'3 (3.76m x 3.43m)

OUTSIDE

Front Garden
Car Barn
Driveway
Rear Garden



Main features

- Stunning 4-bedroom semi-detached house
- Large sociable lounge-diner leading out to the garden
- En-Suite shower room
- Low maintenance private rear garden
- Driveway and car barn
- Highly desirable location moments from Tenterden High Street



Nearest Schools

Primary Schools: Tenterden C of E Junior School 0.2 miles, St Michael's C of E Primary (Tenterden) 1.5 miles, Rolvenden Primary 2.6 miles
Secondary Schools: Homewood School and Sixth Form Centre 0.9 miles, Benenden School 5.0 miles, Frewen



Transport Information

Train Stations: Appledore 5.8 miles, Pluckley 7.0 miles, Ham Street 7.2 miles



Address

Three Fields Road, Tenterden, Kent, TN30



Directions

For directions to this property please contact us.



Wards
Helping you move forwards

Call Tenterden Branch 01580 766002 ■ wardsofkent.co.uk



■ Legal advice should be taken to verify fixtures/fittings, planning, alterations and/or lease details ■ Appliances & services are untested, dimensions are approximate and floor plans are not to scale
■ Through a Homewise Home For Life Plan people aged 60+ can secure this property for up to 59% less, by purchasing a Lifetime Lease.



14008016/20250313/CD/AQ