



Guide Price
£290,000

Freehold

3x  1x  1x 

**Hopes Grove, High
Halden, Kent, TN26**

OVER 60?

Secure this property
for up to **59% less!**

Wards
Helping you move forwards



Main features

- Wonderful 3 bedroom mid -terrace house
- Open plan lounge/diner
- Envious garden leading on to rural countryside
- Allocated parking space
- Convenient village location close to Tenterden and Ashford

Accommodation

GROUND FLOOR

Entrance

Lounge/Diner: 22'10 x 13'5 (6.96m x 4.09m)

Kitchen: 8'4 x 7'11 (2.54m x 2.41m)

FIRST FLOOR

Landing

Bedroom 1: 10'10 x 10'4 (3.30m x 3.15m)

Bedroom 2: 10'0 x 7'6 (3.05m x 2.29m)

Bedroom 3: 8'11 x 7'2 (2.72m x 2.19m)

Bathroom: 6'10 x 5'5 (2.08m x 1.65m)

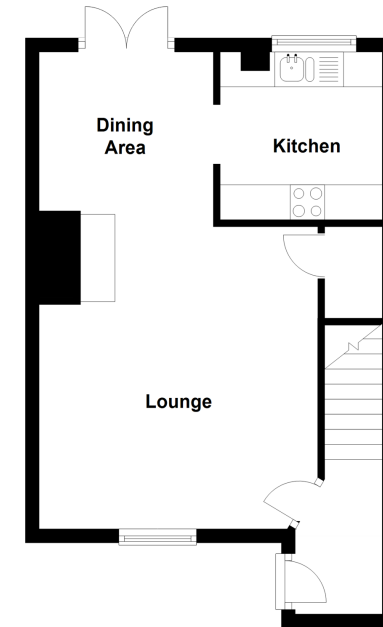
OUTSIDE

Rear Garden

Allocated Parking

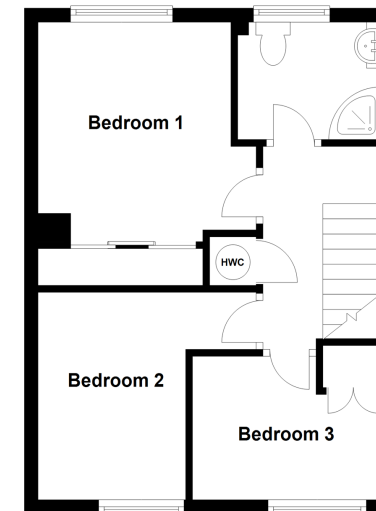
Ground Floor

Approx. 35.6 sq. metres (383.3 sq. feet)



First Floor

Approx. 34.0 sq. metres (366.3 sq. feet)



Call Tenterden - 01580 766002 ■ wardsofkent.co.uk

- Legal advice should be taken to verify fixtures/fittings, planning, alterations and/or lease details
- Appliances & services are untested, dimensions are approximate and floor plans are not to scale
- Through a Homewise Home For Life Plan people aged 60+ can secure this property for up to 59% less, by purchasing a Lifetime Lease.



14007906/20250314/RM/AQ