



Price
£260,000

Freehold

2x  1x  2x 

**Jubilee Field,
Wittersham, Tenterden,
Kent, TN30**

OVER 60?

Secure this property
for up to **59% less!**

Wards
Helping you move forwards



Main features

- 2 bedroom mid-terraced house (opened up from its original 3 bedroom layout)
- Kitchen with separate dining area
- Sunny well maintained garden with large shed
- Popular village location
- Within easy reach of Rye and Tenterden

Accommodation

GROUND FLOOR

- Porch
- Hall
- Dining Area: 11'0 x 7'5 (3.36m x 2.26m)
- Kitchen: 10'8 x 8'4 (3.25m x 2.54m)
- Lounge: 15'5 x 12'0 (4.70m x 3.66m)
- Conservatory

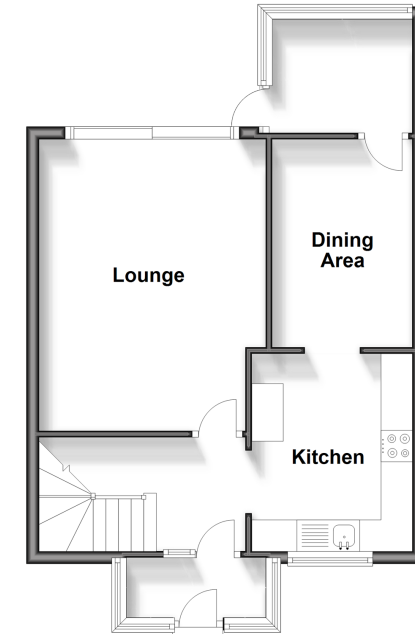
FIRST FLOOR

- Landing
- Toilet
- Bathroom: 5'11 x 5'2 (1.80m x 1.58m)
- Bedroom 1: 15'6 x 10'9 (4.73m x 3.28m)
- Bedroom 2: 11'7 x 8'7 (3.53m x 2.62m)

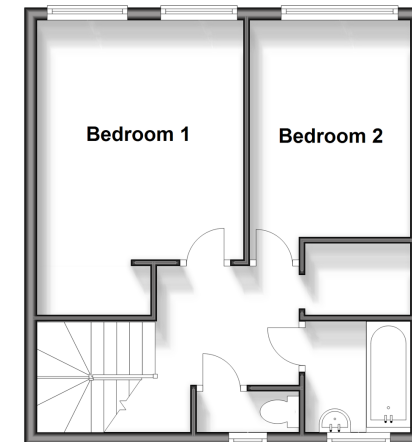
OUTSIDE

- Front and Rear Gardens

Ground Floor
Approx. 45.5 sq. metres (489.8 sq. feet)



First Floor
Approx. 38.9 sq. metres (418.8 sq. feet)



Call Tenterden - 01580 766002 ■ wardsof Kent.co.uk

- If buying to let, the energy rating will need to be improved to at least 'E' rating before you can let the property
- Legal advice should be taken to verify fixtures/fittings, planning, alterations and/or lease details
- Appliances & services are untested, dimensions are approximate and floor plans are not to scale
- Through a Homewise Home For Life Plan people aged 60+ can secure this property for up to 59% less, by purchasing a Lifetime Lease.



14005759/20240416/NS/AQ