



Price
£375,000

Freehold

3x  1x  1x 

**Front Road,
Woodchurch, Ashford,
Kent, TN26**

OVER 60?

Secure this property
for up to **59% less!**

Wards
Helping you move forwards



Main features

- Offers Over £375,000
- Great 3 bedroom semi-detached house
- A wonderful property with huge potential
- Beautiful front and rear gardens
- Generous parking facilities for multiple vehicles
- Highly sought after village location

Accommodation

GROUND FLOOR

- Lounge: 16'8 x 10'10 (5.08m x 3.30m)
- Kitchen: 12'5 x 10'7 (3.79m x 3.23m)
- Utility Room: 9'3 x 5'8 (2.82m x 1.73m)
- Shower Room: 6'2 x 5'2 (1.88m x 1.58m)
- Cloakroom
- Conservatory: 21'8 x 9'0 (6.61m x 2.75m)

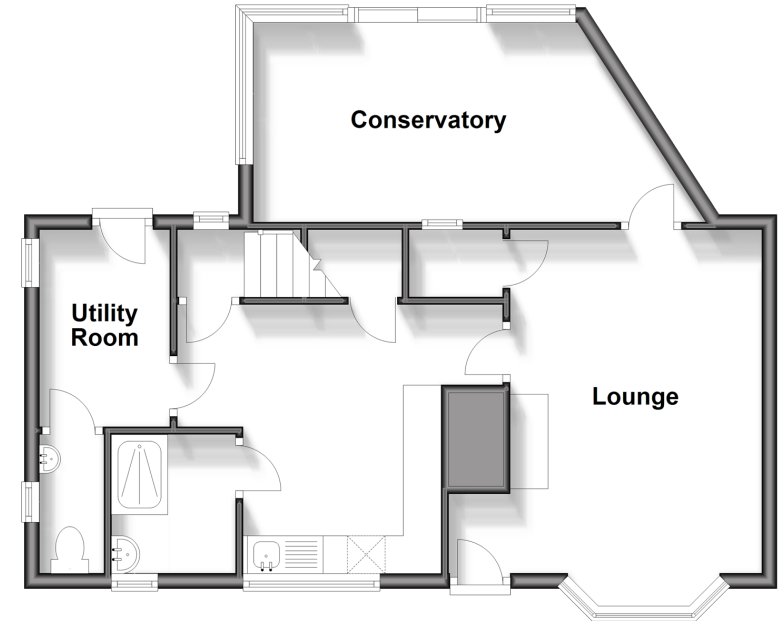
FIRST FLOOR

- Landing
- Bedroom 1: 12'1 x 11'2 (3.69m x 3.41m)
- Bedroom 2: 11'0 x 9'0 (3.36m x 2.75m)
- Bedroom 3: 9'8 x 7'3 (2.95m x 2.21m)
- Eaves

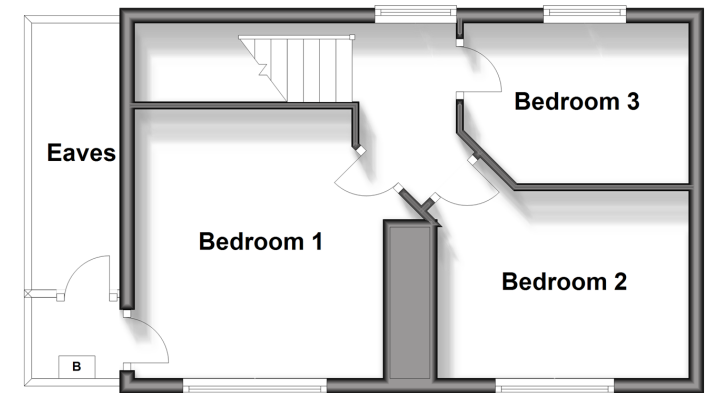
OUTSIDE

- Front and Rear Gardens
- Off Road Parking

Ground Floor
Approx. 58.0 sq. metres (624.0 sq. feet)



First Floor
Approx. 34.5 sq. metres (371.5 sq. feet)



Call Tenterden - 01580 766002 ■ wardsofkent.co.uk

- Legal advice should be taken to verify fixtures/fittings, planning, alterations and/or lease details
- Appliances & services are untested, dimensions are approximate and floor plans are not to scale
- Through a Homewise Home For Life Plan people aged 60+ can secure this property for up to 59% less, by purchasing a Lifetime Lease.



14007587/20241022/AQ/AQ