

OVER 60?

Secure this property
for up to **59% less!**



Price

£725,000

Freehold

4x  2x  2x 

Shoreham Lane, St. Michaels, Tenterden,
Kent, TN30

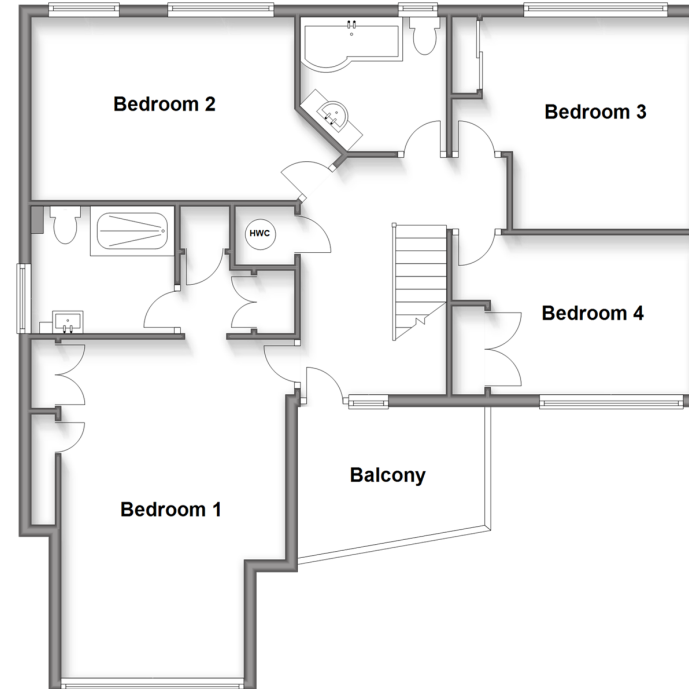
Wards

Helping you move forwards

Ground Floor
Approx. 100.1 sq. metres (1077.0 sq. feet)



First Floor
Approx. 84.2 sq. metres (906.7 sq. feet)



Accommodation

GROUND FLOOR

Entrance Hall
Sitting Room: 17'7 x 14'2 (5.36m x 4.32m)
Study: 14'7 x 7'10 (4.45m x 2.39m)
Lounge/Diner: 20'2 x 13'0 (6.15m x 3.97m)
Kitchen: 17'0 x 14'8 at widest point (5.19m x 4.47m)

Conservatory Area: 7'10 x 7'5 (2.39m x 2.26m)
Utility: 10'0 x 4'10 (3.05m x 1.47m)
Toilet

FIRST FLOOR

Landing
Bedroom 1: 16'10 x 12'0 (5.13m x 3.66m)
En-Suite Shower Room: 8'2 x 7'1 (2.49m x 2.16m)
Bedroom 2: 13'4 x 11'2 (4.07m x 3.41m)
Bedroom 3: 17'2 x 8'10 (5.24m x 2.69m)
Bedroom 4: 13'0 x 8'9 (3.97m x 2.67m)
Bathroom: 7'10 x 7'5 (2.39m x 2.26m)

OUTSIDE

Driveway
Front and Rear Gardens
Front Balcony
Store
3 x Sheds



Main features

- Stunning 4 bedroom detached house
- Free flowing open plan layout incorporating a spectacular kitchen
- Multiple reception spaces to include the lounge/diner, sun room, sitting room and study
- Bedroom 1 comes complete with an en-suite shower room
- Wrap around, low maintenance, sunny garden
- Plenty of off road parking for multiple vehicles



Nearest Schools

Primary Schools: St Michael's C of E Primary (Tenterden) 0.1 miles, Tenterden C of E Junior School 1.3 miles, High Halden C of E Primary 1.6 miles

Secondary Schools: Homewood School and Sixth Form



Transport Information

Train Stations: Pluckley 5.5 miles, Headcorn 6.1 miles, Appledore 6.6 miles



Address

Shoreham Lane, St. Michaels, Tenterden, Kent, TN30



Directions

For directions to this property please contact us.



Wards
Helping you move forwards

Call Tenterden Branch 01580 766002 ■ wardsofkent.co.uk



- The seller is a person connected with Wards as defined in the Estate Agents Act 1979
- Appliances & services are untested, dimensions are approximate and floor plans are not to scale

- Legal advice should be taken to verify fixtures/fittings, planning, alterations and/or lease details
- Through a Homewise Home For Life Plan people aged 60+ can secure this property for up to 59% less, by purchasing a Lifetime Lease.



14007734/20240208/NS/AQ