

OVER 60?

Secure this property
for up to **59% less!**



Price

£350,000

Freehold

3x  2x  1x 

Ewe And Lamb Mews, Wittersham,
Tenterden, Kent, TN30

Wards

Helping you move forwards



Main features

- Offers over £350,000
- Stunning 3 bedroom end of terrace house
- Generous room dimensions
- Super sized rear garden
- Desirable village location within easy reach of Rye and Tenterden
- Chain free

Accommodation

GROUND FLOOR

- Porch
- Hallway
- Kitchen/Diner: 16'11 x 9'6 (5.16m x 2.90m)
- Utility Room: 9'10 x 8'1 (3.00m x 2.47m)
- Lounge: 18'5 at widest point x 17'1 (5.62m x 5.21m)
- Cloakroom

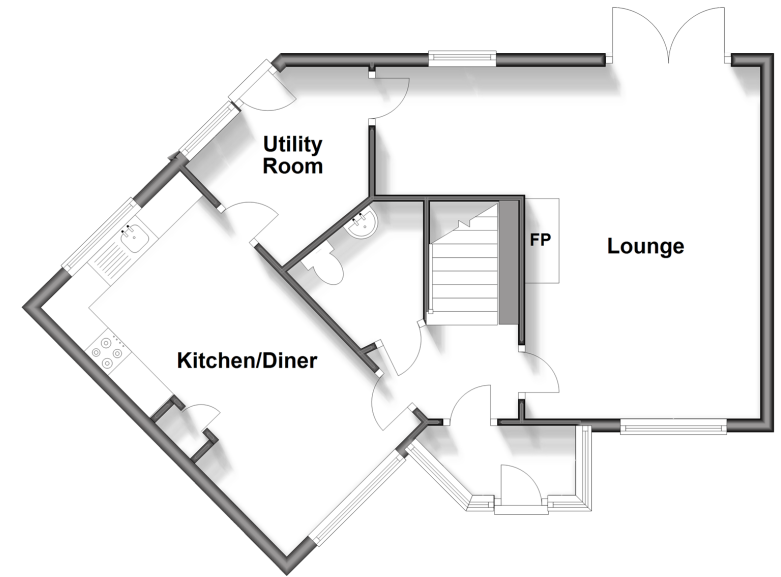
FIRST FLOOR

- Landing
- Bedroom 1: 17'0 x 12'8 (5.19m x 3.86m)
- En-Suite Shower Room
- Bedroom 2: 11'3 x 9'1 (3.43m x 2.77m)
- Bedroom 3: 11'10 x 7'4 (3.61m x 2.24m)
- Bathroom: 6'6 x 5'7 (1.98m x 1.70m)

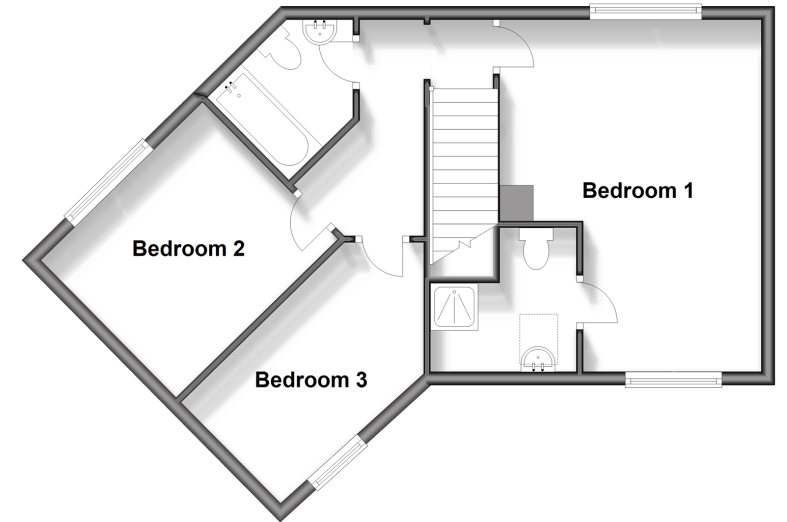
OUTSIDE

- Front and Rear Gardens
- Driveway & Garage

Ground Floor
Approx. 54.0 sq. metres (581.5 sq. feet)



First Floor
Approx. 51.5 sq. metres (554.6 sq. feet)



Call Tenterden - 01580 766002 ■ wardsofkent.co.uk

- Legal advice should be taken to verify fixtures/fittings, planning, alterations and/or lease details
- Appliances & services are untested, dimensions are approximate and floor plans are not to scale
- Through a Homewise Home For Life Plan people aged 60+ can secure this property for up to 59% less, by purchasing a Lifetime Lease.



14007434/20240501/LH/AQ