



Price
£320,000

Freehold

2x  1x  1x 

**Robyn Cottages,
Ashford Road, High
Halden, Ashford, Kent,
TN26**

OVER 60?

Secure this property
for up to **59% less!**

Wards
Helping you move forwards



Main features

- Beautifully presented 2 bedroom semi-detached house
- Lounge complimented by a modern conservatory
- Up to date kitchen and bathroom
- Attractive low maintenance rear garden
- Drive with off road parking for 2 vehicles

Accommodation

GROUND FLOOR

Entrance Hall

Kitchen: 9'11 x 6'1 (3.02m x 1.86m)

Lounge: 15'10 x 12'8 (4.83m x 3.86m)

Conservatory: 10'3 x 7'8 (3.13m x 2.34m)

FIRST FLOOR

Landing

Bedroom 1: 12'10 x 9'4 (3.91m x 2.85m)

Bedroom 2: 10'4 x 9'6 up to fitted cupboard (3.15m x 2.90m)

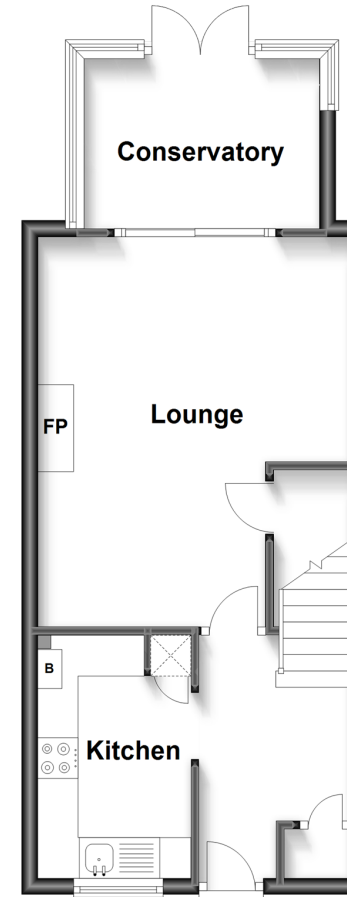
Bathroom

OUTSIDE

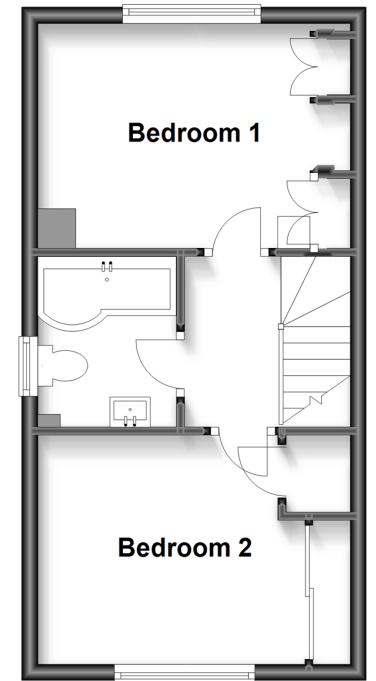
Front and Rear Gardens

Driveway

Ground Floor
Approx. 36.9 sq. metres (396.8 sq. feet)



First Floor
Approx. 30.7 sq. metres (330.8 sq. feet)



Call Tenterden - 01580 766002 ■ wardsofkent.co.uk

- Legal advice should be taken to verify fixtures/fittings, planning, alterations and/or lease details
- Appliances & services are untested, dimensions are approximate and floor plans are not to scale
- Through a Homewise Home For Life Plan people aged 60+ can secure this property for up to 59% less, by purchasing a Lifetime Lease.



14007551/20240806/RM/AQ