



OVER 60?

Secure this property
for up to **59% less!**

Price

£550,000

Freehold

5x  2x  1x 

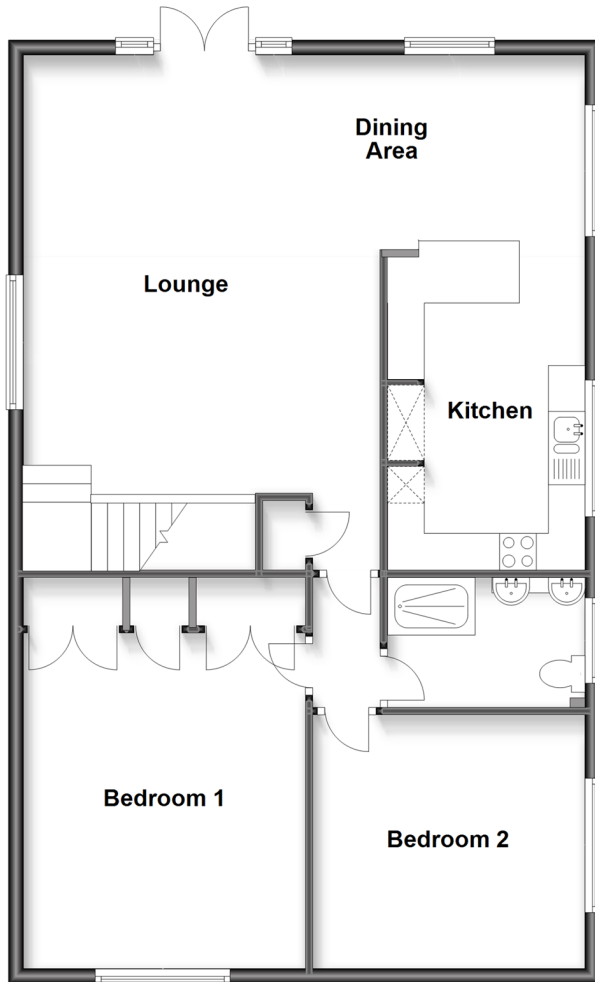
**Ashford Road, St.
Michaels, Tenterden,
Kent, TN30**

Wards

Helping you move forwards

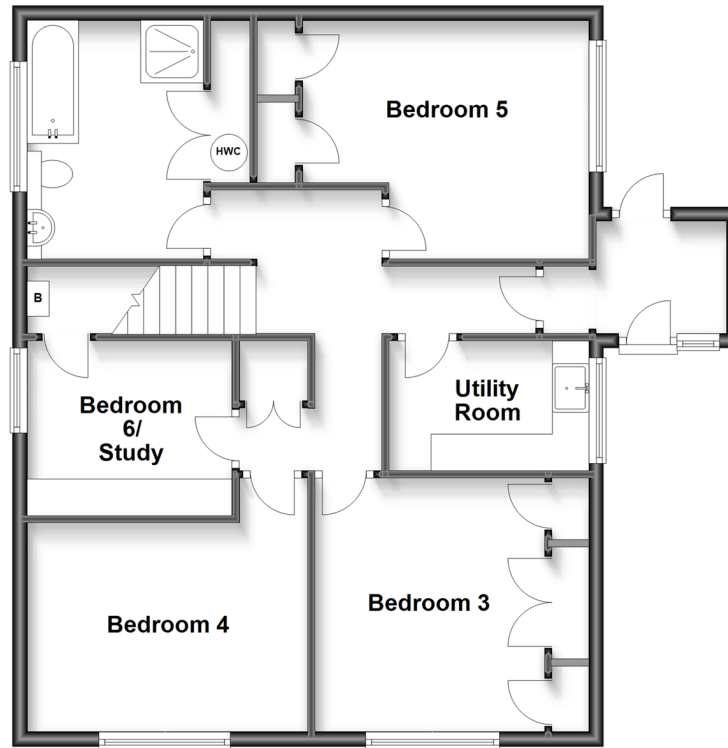
First Floor

Approx. 95.4 sq. metres (1026.6 sq. feet)



Ground Floor

Approx. 77.1 sq. metres (830.1 sq. feet)



Accommodation

GROUND FLOOR

Porch

Entrance Hall

Utility Room: 9'5 x 5'10 (2.87m x 1.78m)

Bathroom: 10'3 x 7'9 (3.13m x 2.36m)

Bedroom 3: 13'7 x 10'9 (4.14m x 3.28m)

Bedroom 4: 12'7 x 9'8 (3.84m x 2.95m)

Bedroom 5: 11'5 x 10'4 (3.48m x 3.15m)

Bedroom 6/Study: 9'3 x 7'9 (2.82m x 2.36m)

FIRST FLOOR

Landing

Kitchen: 13'11 x 8'10 (4.24m x 2.69m)

Dining Area: 10'8 x 9'5 (3.25m x 2.87m)

Lounge: 23'8 x 15'11 (7.22m x 4.85m)

Shower Room: 9'0 x 6'3 (2.75m x 1.91m)

Bedroom 1: 15'0 x 12'6 (4.58m x 3.81m)

Bedroom 2: 12'7 x 11'4 (3.84m x 3.46m)

OUTSIDE

Front and Rear Gardens

2 x Garages

Driveway



Main features

- Bright spacious 5/6 bedroom detached house
- Unique layout lending itself to multi-generational living with annexe potential
- Open plan lounge, dining and kitchen areas creating a sociable environment
- Well maintained private rear garden
- 2 garages and driveway parking



Nearest Schools

Primary Schools: St Michael's C of E Primary 0.6 miles, Tenterden C of E Junior School 0.7 miles, High Halden C of E Primary 1.9 miles

Secondary Schools: Homewood School and Sixth Form



Transport Information

Train Stations: Appledore 5.9 miles, Pluckley 6.0 miles, Headcorn 6.9 miles



Address

Ashford Road, St. Michaels, Tenterden, Kent, TN30



Directions

For directions to this property please contact us.



Wards
Helping you move forwards

Call Tenterden Branch 01580 766002 ■ wardsof Kent.co.uk



- Legal advice should be taken to verify fixtures/fittings, planning, alterations and/or lease details
- Appliances & services are untested, dimensions are approximate and floor plans are not to scale
- Through a Homewise Home For Life Plan people aged 60+ can secure this property for up to 59% less, by purchasing a Lifetime Lease.

EPC RATING	CURRENT:	POTENTIAL:
	D(62)	B(31)

14007537/20240321/AQ/AQ