



Price
£250,000

Freehold

1x  1x  1x 

**Prospect Cottages, The
Street, Bethersden
Ashford, Kent, TN26**

OVER 60?

Secure this property
for up to **59% less!**

Wards
Helping you move forwards



Main features

- Charming grade II listed period cottage
- Beautifully presented in keeping of its beautiful period features
- Picturesque village location
- Surrounded by stunning countryside
- Good sized private rear and sunny garden

Accommodation

GROUND FLOOR

- Lounge: 15'1 x 8'2 (4.60m x 2.49m)
- Kitchen: 8'6 x 8'2 (2.59m x 2.49m)
- Conservatory: 11'2 x 8'2 (3.41m x 2.49m)

FIRST FLOOR

- Landing
- Bedroom: 15'1 x 8'2 (4.60m x 2.49m)
- Bathroom

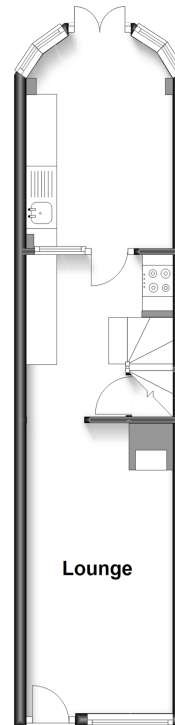
SECOND FLOOR

- Loft Area: 12'4 x 8'2 (3.76m x 2.49m)

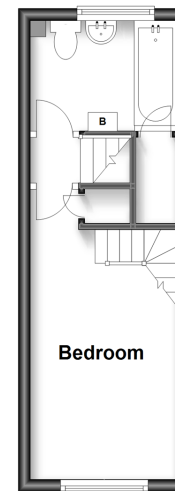
OUTSIDE

- Front and Rear Gardens

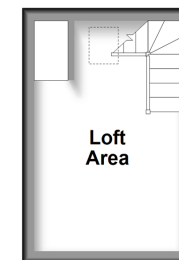
Ground Floor
Approx. 25.7 sq. metres (276.5 sq. feet)



First Floor
Approx. 17.6 sq. metres (189.9 sq. feet)



Second Floor
Approx. 8.9 sq. metres (95.4 sq. feet)



Call Tenterden - 01580 766002 ■ wardsof Kent.co.uk

■ Legal advice should be taken to verify fixtures/fittings, planning, alterations and/or lease details
 ■ Through a Homewise Home For Life Plan people aged 60+ can secure this property for up to 59% less, by purchasing a Lifetime Lease.

■ Appliances & services are untested, dimensions are approximate and floor plans are not to scale



14007536/20240320/AQ/LH