



**Guide Price**  
**£400,000**

**Freehold**

5x  2x  1x 

**Headstock Rise, Hoo,  
Rochester, Kent, ME3**

**OVER 60?**

Secure this property  
for up to **59% less!**

*Wards*  
Helping you move forwards





## Main features

- 4/5 bedroom terraced house
- Car port and garage for up to 4 cars
- En-suite shower room to the main bedroom
- Village location close to Hoo Marina
- Walking distance to local schools

## Accommodation

### GROUND FLOOR

Entrance Hall  
 Kitchen/Diner : 23'10 x 10'3 (7.27m x 3.13m)  
 Rear Lobby  
 Cloakroom

### FIRST FLOOR

Landing  
 Lounge: 15'3 x 13'3 (4.65m x 4.04m)  
 Study/Bedroom 5 : 8'7 x 6'7 (2.62m x 2.01m)  
 Bedroom 1: 18'6 x 9'2 (5.64m x 2.80m)  
 En-Suite Shower Room: 9'0 x 4'6 (2.75m x 1.37m)

### SECOND FLOOR

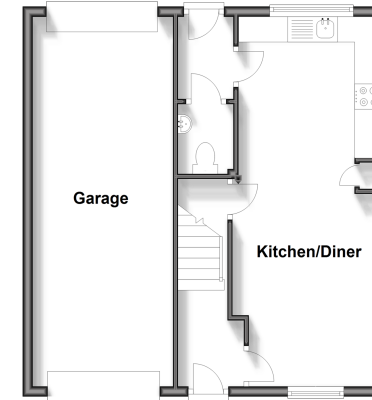
Landing  
 Bedroom 2 : 14'5 x 10'2 (4.40m x 3.10m)  
 Bedroom 3 : 12'7 x 11'0 (3.84m x 3.36m)  
 Bedroom 4 : 12'4 x 9'6 (3.76m x 2.90m)  
 Bathroom : 7'3 x 6'7 (2.21m x 2.01m)

### OUTSIDE

Front Garden  
 Rear Garden  
 Garage To Rear  
 Car Port

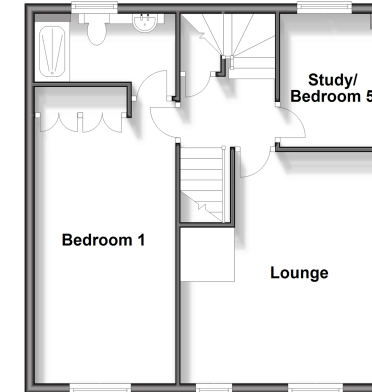
### Ground Floor

Approx. 50.4 sq. metres (542.7 sq. feet)



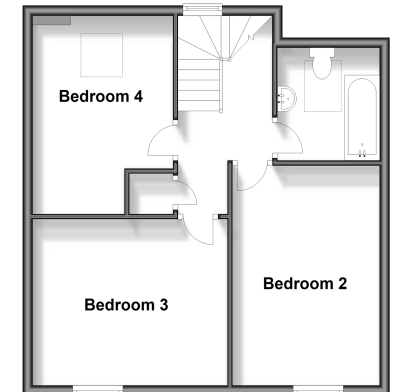
### First Floor

Approx. 50.5 sq. metres (544.0 sq. feet)



### Second Floor

Approx. 49.3 sq. metres (531.1 sq. feet)



**Call Strood - 01634 716597 ■ [wardsof Kent.co.uk](http://wardsof Kent.co.uk)**

- Legal advice should be taken to verify fixtures/fittings, planning, alterations and/or lease details
- Appliances & services are untested, dimensions are approximate and floor plans are not to scale
- Through a Homewise Home For Life Plan people aged 60+ can secure this property for up to 59% less, by purchasing a Lifetime Lease.



11846158/20240720/DV/CM