



**OVER 60?**

Secure this property  
for up to **59% less!**

**Guide Price**  
**£400,000**

**Freehold**

4x  2x  2x 

**Armstrong Close, Hoo,  
Kent, ME3**

*Wards*  
Helping you move forwards





## Main features

- 4 bedroom detached house
- Driveway
- En-suite shower room to main bedroom
- Sought after village location
- Walking distance to local shops, primary and secondary schools
- Still within NHBC guarantee

## Accommodation

### GROUND FLOOR

Entrance Hall  
Cloakroom  
Kitchen/Diner : 15'3 x 8'11 (4.65m x 2.72m)  
Lounge : 17'9 x 16'3 (5.41m x 4.96m)

### FIRST FLOOR

Landing  
Bedroom 2 : 14'8 x 8'8 (4.47m x 2.64m)  
Bedroom 3 : 14'0 x 7'2 (4.27m x 2.19m)  
Bedroom 4 : 10'3 x 8'11 (3.13m x 2.72m)  
Bathroom: 7'3 x 5'7 (2.21m x 1.70m)

### SECOND FLOOR

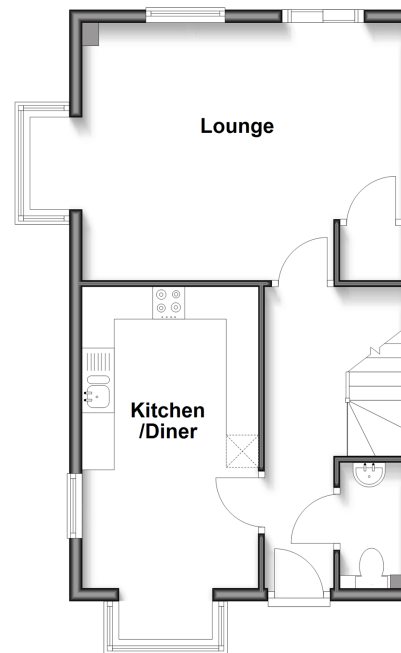
Landing  
Bedroom 1 : 12'10 x 11'3 (3.91m x 3.43m)  
En-Suite Shower Room

### OUTSIDE

Driveway  
Front Garden  
Rear Garden

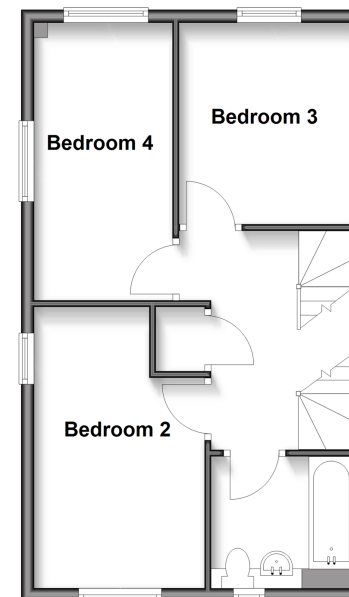
### Ground Floor

Approx. 44.7 sq. metres (481.2 sq. feet)



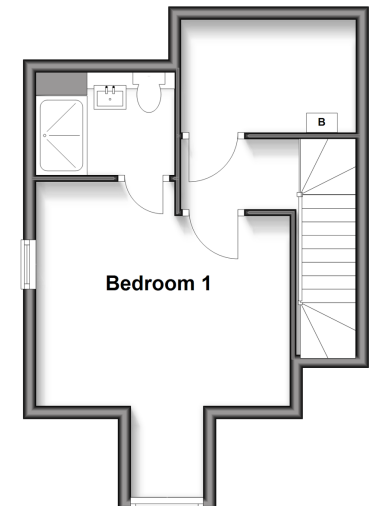
### First Floor

Approx. 43.6 sq. metres (468.8 sq. feet)



### Second Floor

Approx. 28.7 sq. metres (309.1 sq. feet)



**Call Strood - 01634 716597 ■ [wardsofkent.co.uk](http://wardsofkent.co.uk)**

■ Legal advice should be taken to verify fixtures/fittings, planning, alterations and/or lease details  
■ Through a Homewise Home For Life Plan people aged 60+ can secure this property for up to 59% less, by purchasing a Lifetime Lease.

■ Appliances & services are untested, dimensions are approximate and floor plans are not to scale



11845411/20250621/DV/CM