



Guide Price
£425,000

Freehold

3x  1x  1x 

**Sholden Road, Strood,
Rochester, Kent, ME2**

OVER 60?

Secure this property
for up to **59% less!**

Wards
Helping you move forwards



Main features

- **3 bedroom extended semi-detached house in popular location**
- **Stunning modern kitchen/diner and a spacious lounge/dining area**
- **Handy downstairs cloakroom and utility room**
- **Garage and workshop**
- **Walking distance to schools and amenities**

Accommodation

GROUND FLOOR

Entrance Hall
Utility Room : 8'3 x 7'5 (2.52m x 2.26m)
Cloakroom
Lounge/Dining Area: 20'0 x 9'4 (6.10m x 2.85m)
Kitchen/Diner : 17'3 x 12'2 (5.26m x 3.71m)

FIRST FLOOR

Landing
Bedroom 1 : 13'10 x 8'7 (4.22m x 2.62m)
Bedroom 2 : 11'9 x 9'5 (3.58m x 2.87m)
Bedroom 3 : 8'3 x 7'2 (2.52m x 2.19m)
Bathroom

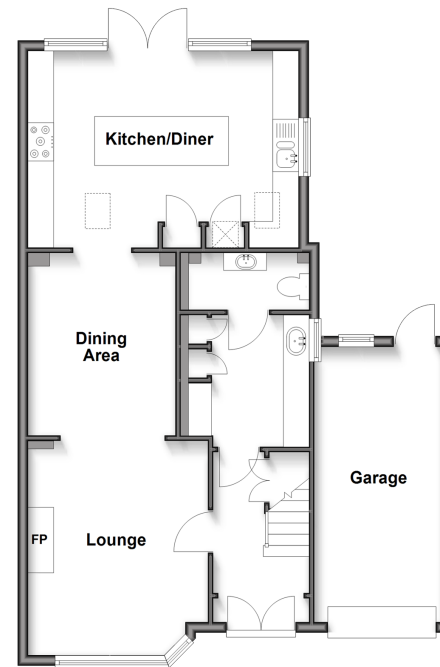
OUTBUILDING

Workshop (Room 1) : 17'5 x 7'10 (5.31m x 2.39m)

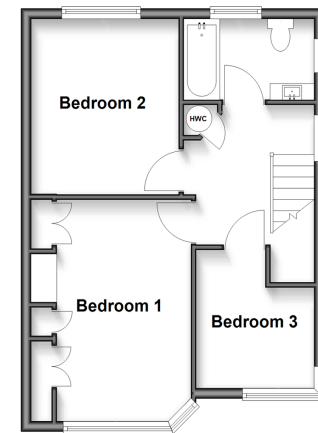
OUTSIDE

Driveway
Garage
Front Garden
Rear Garden

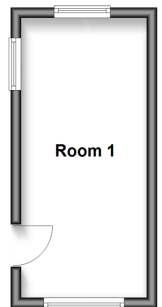
Ground Floor
Approx. 74.3 sq. metres (799.9 sq. feet)



First Floor
Approx. 40.7 sq. metres (438.0 sq. feet)



Outbuilding
Approx. 13.0 sq. metres (140.4 sq. feet)



Call Strood - 01634 716597 ■ wardsofkent.co.uk

■ Legal advice should be taken to verify fixtures/fittings, planning, alterations and/or lease details
■ Through a Homewise Home For Life Plan people aged 60+ can secure this property for up to 59% less, by purchasing a Lifetime Lease.

■ Appliances & services are untested, dimensions are approximate and floor plans are not to scale



11846426/20250515/DV/CM