



**Guide Price**  
**£300,000**

**Freehold**

3x  2x  1x 

**Green Lane, Isle Of  
Grain, Rochester, Kent,  
ME3**

**OVER 60?**

Secure this property  
for up to **59% less!**

*Wards*  
Helping you move forwards





## Main features

- Detached 3 bedroom bungalow in a peaceful village setting
- Landscaped garden with patio area
- Looking onto an open green and only a short walk to the sea front
- En-suite shower room
- Over 2 years of building warranty for peace of mind

## Accommodation

### GROUND FLOOR

Entrance Hall

Lounge/Dining/Kitchen Area: 24'4 (7.42m) x 18'8 (5.69m) narrowing to 13'9 (4.19m)

Bedroom 1 : 12'4 x 9'9 (3.76m x 2.97m)

En-Suite Shower Room

Bedroom 2 : 11'6 x 8'4 (3.51m x 2.54m)

Bedroom 3 : 8'4 x 7'1 (2.54m x 2.16m)

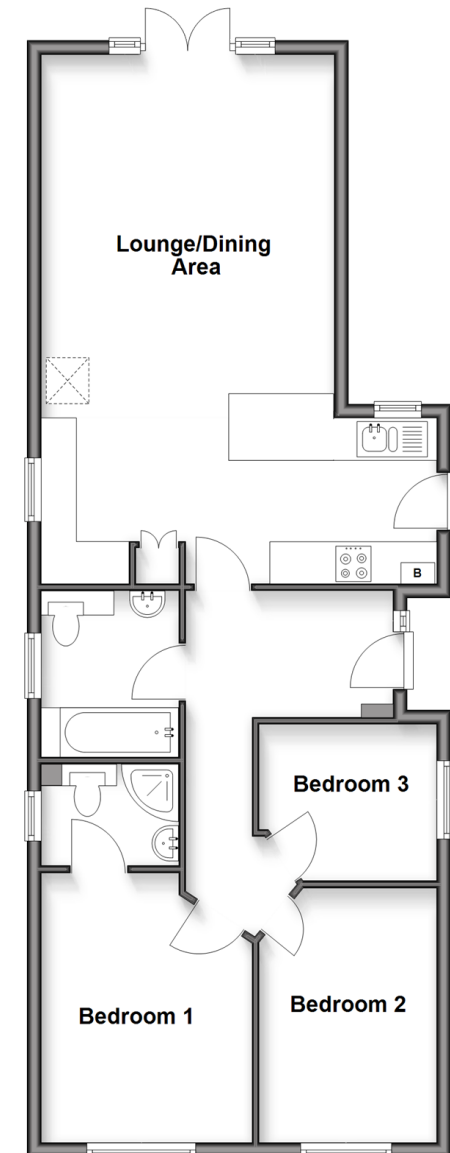
Bathroom

### OUTSIDE

Driveway

Rear Garden

**Ground Floor**  
Approx. 77.8 sq. metres (837.5 sq. feet)



**Call Strood - 01634 716597 ■ [wardsof Kent.co.uk](http://wardsof Kent.co.uk)**

- Legal advice should be taken to verify fixtures/fittings, planning, alterations and/or lease details
- Appliances & services are untested, dimensions are approximate and floor plans are not to scale
- Through a Homewise Home For Life Plan people aged 60+ can secure this property for up to 59% less, by purchasing a Lifetime Lease.



11826685/20250603/DV/MC