



**Price**  
**£325,000**

**Freehold**

2x  1x  1x 

**Rushdean Road, Strood,  
Rochester, Kent, ME2**

**OVER 60?**

Secure this property  
for up to **59% less!**

*Wards*  
Helping you move forwards





## Main features

- Extended semi-detached bungalow
- Conservatory, 20' kitchen/dining area
- Driveway for several cars and a garage
- Mature and easy to maintain garden
- Close to shops, doctors surgery and motorway links
- No onward chain

## Accommodation

### GROUND FLOOR

Entrance Hall

Lounge: 15'0 x 11'5 (4.58m x 3.48m)

Kitchen/Dining Area: 20'3 x 8'10 (6.18m x 2.69m)

Conservatory : 13'8 x 7'9 (4.17m x 2.36m)

Bedroom 1 : 12'7 x 8'3 (3.84m x 2.52m)

Bedroom 2 : 9'10 x 9'2 (3.00m x 2.80m)

Bathroom : 6'1 x 5'6 (1.86m x 1.68m)

### OUTBUILDING

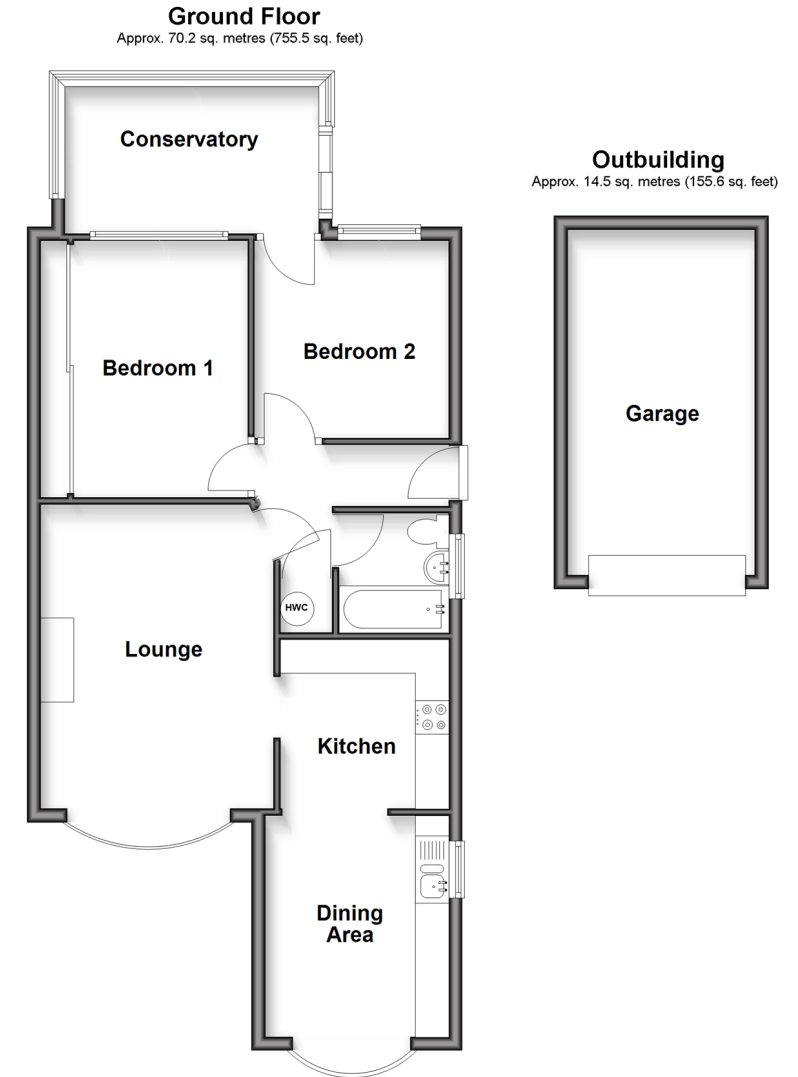
Garage

### OUTSIDE

Driveway To Side

Front Garden

Rear Garden



**Call Strood - 01634 716597 ■ [wardsof Kent.co.uk](http://wardsof Kent.co.uk)**

- Legal advice should be taken to verify fixtures/fittings, planning, alterations and/or lease details
- Appliances & services are untested, dimensions are approximate and floor plans are not to scale
- Through a Homewise Home For Life Plan people aged 60+ can secure this property for up to 59% less, by purchasing a Lifetime Lease.



11846501/20250618/JC/JC