



Guide Price
£500,000

Freehold

4x  2x  2x 

**Weston Road, Strood,
Rochester, Kent, ME2**

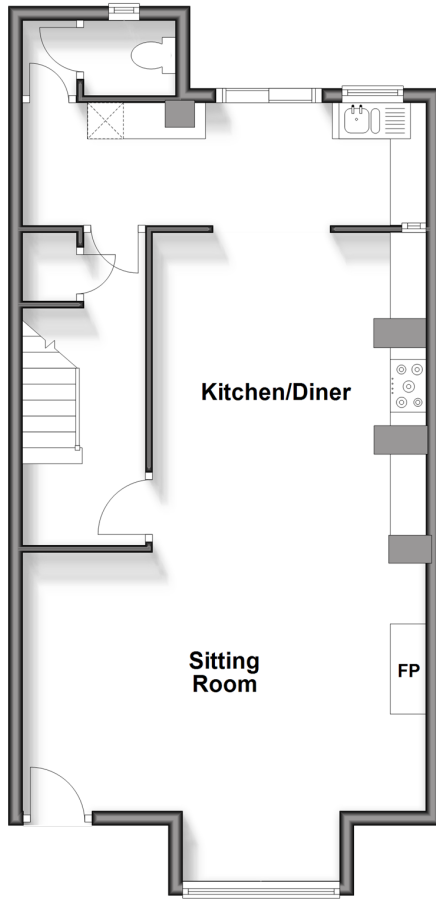
OVER 60?

Secure this property
for up to **59% less!**

Wards
Helping you move forwards

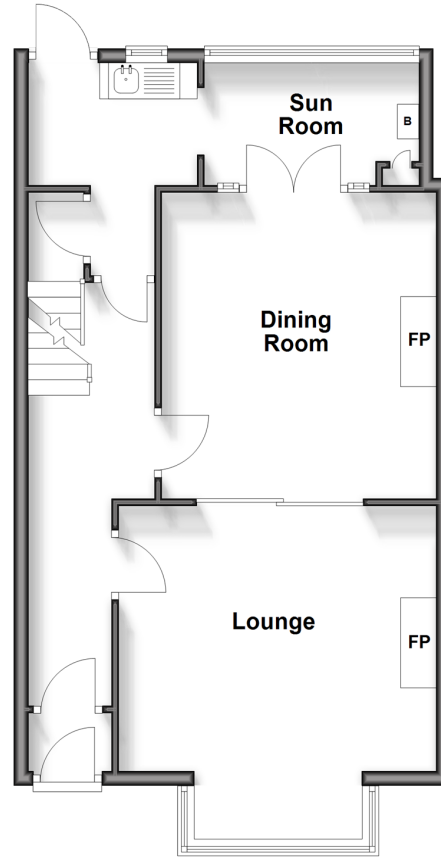
Lower Ground Floor

Approx. 60.3 sq. metres (648.8 sq. feet)



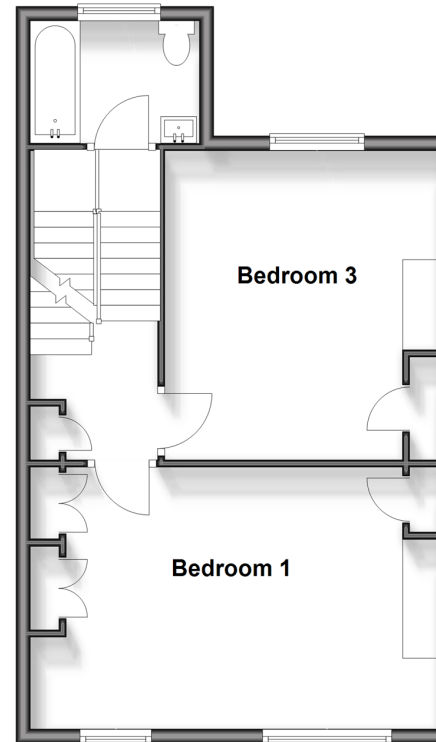
Split Level Ground Floor

Approx. 56.9 sq. metres (611.9 sq. feet)



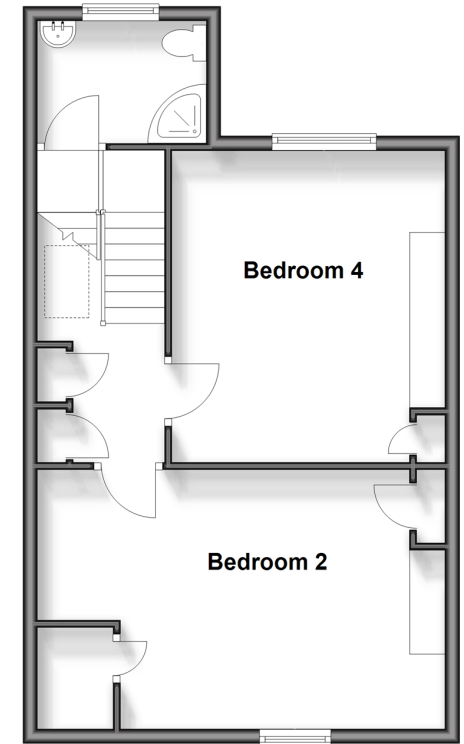
Split Level First Floor

Approx. 50.2 sq. metres (540.6 sq. feet)



Split Level Second Floor

Approx. 50.0 sq. metres (537.7 sq. feet)



Accommodation

SPLIT LEVEL GROUND FLOOR

Porch
Hallway
Lounge: 15'11 x 14'9 (4.85m x 4.50m)
Dining Room: 14'5 x 12'8 (4.40m x 3.86m)
Sun Room: 9'11 x 7'1 (3.02m x 2.16m)
Pantry: 7'2 x 5'8 (2.19m x 1.73m)

LOWER GROUND FLOOR

Hallway
Kitchen/Diner/Sitting Room: 30'1 x 18'7 (9.18m x 5.67m)
Utility Area: 19'0 x 5'11 (5.80m x 1.80m)
Cloakroom

SPLIT LEVEL FIRST FLOOR

Landing
Bedroom 1: 19'0 x 12'8 (5.80m x 3.86m)
Bedroom 3: 14'3 x 11'6 (4.35m x 3.51m)
Bathroom

SPLIT LEVEL SECOND FLOOR

Landing
Bedroom 2 : 17'9 x 12'6 (5.41m x 3.81m)
Bedroom 4: 14'0 x 12'7 (4.27m x 3.84m)
Shower Room

OUTSIDE

Front Garden
Rear Garden



Main features

- Period terraced house with double bedrooms
- 30' kitchen/diner with sitting room
- Within walking distance of Historic Rochester
- Fantastic features such as log burner, sash windows and original fireplaces
- Bathroom, shower room and downstairs cloakroom
- 37 minutes from Strood Station to London
- Set over 2300 square foot



Nearest Schools

Primary & Secondary Schools: Gordon Juniors 0.2 miles, All Faiths' 0.4 miles, English Martyrs' Catholic Primary 0.7 miles, Abbey Court Community Special School 0.9 miles, Strood Academy 1.1 miles, King's School, Rochester 1.2 miles



Transport Information

Train Stations: Strood 0.8 miles, Rochester 1.5 miles, Higham 2.2 miles



Address

Weston Road, Strood, Rochester, Kent, ME2



Directions

For directions to this property please contact us.



Wards
Helping you move forwards

Call Strood Branch 01634 716597 ■ wardsofkent.co.uk



■ Legal advice should be taken to verify fixtures/fittings, planning, alterations and/or lease details ■ Appliances & services are untested, dimensions are approximate and floor plans are not to scale
■ Through a Homewise Home For Life Plan people aged 60+ can secure this property for up to 59% less, by purchasing a Lifetime Lease.



11845955/20250408/DV/CM