



OVER 60?

Secure this property
for up to **59% less!**

Price

£550,000

Freehold

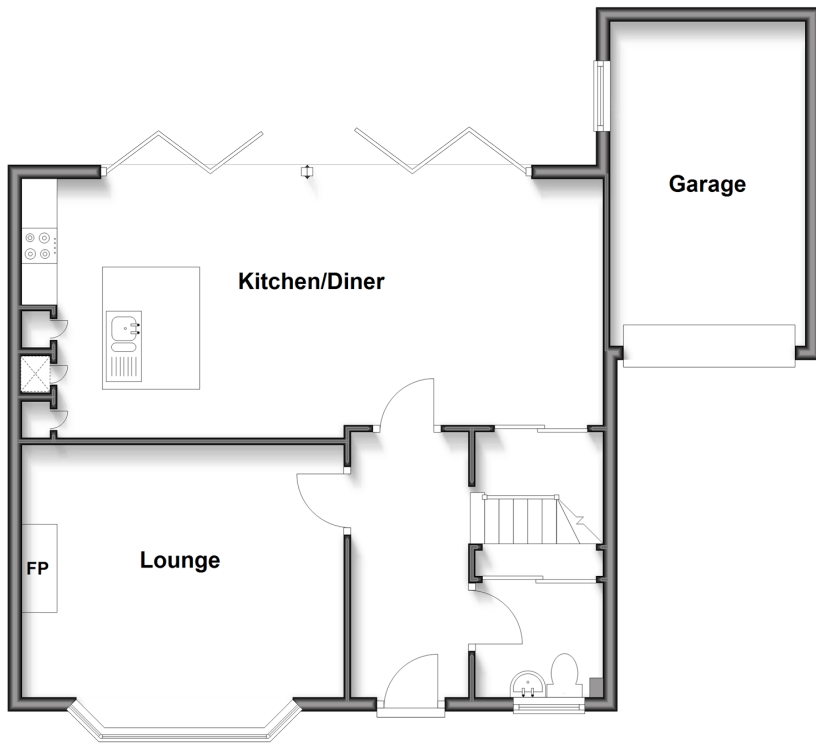
4x  2x  1x 

**Rolvenden Road,
Wainscott, Rochester,
Kent, ME2**

Wards
Helping you move forwards

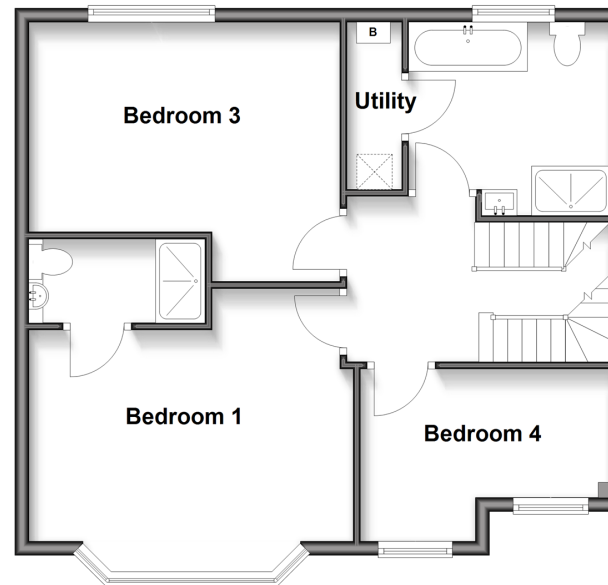
Ground Floor

Approx. 74.0 sq. metres (796.0 sq. feet)



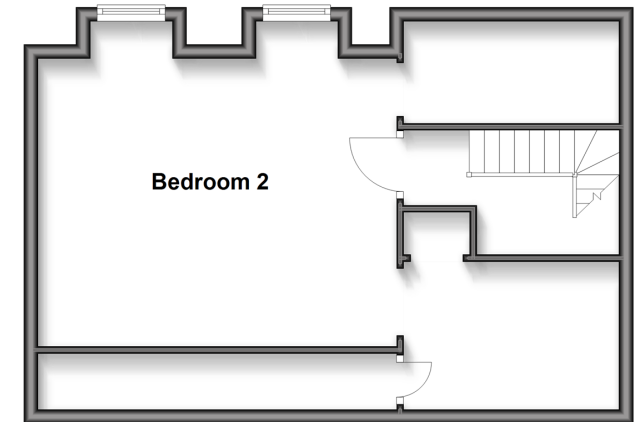
First Floor

Approx. 59.8 sq. metres (644.0 sq. feet)



Second Floor

Approx. 43.8 sq. metres (471.7 sq. feet)



Accommodation

GROUND FLOOR

Entrance Hall: 12'3 x 5'6 (3.74m x 1.68m)
Cloakroom
Kitchen/Diner: 27'6 x 11'10 (8.39m x 3.61m)
Lounge: 15'0 x 13'6 (4.58m x 4.12m)

FIRST FLOOR

Landing
Bedroom 1: 15'1 x 13'9 (4.60m x 4.19m)
En-Suite Shower Room
Bedroom 3: 14'0 x 9'6 (4.27m x 2.90m)
Bedroom 4: 12'0 (3.66m) x 8'9 (2.67m) narrowing to 6'6 (1.98m)
Bathroom: 10'6 x 8'8 (3.20m x 2.64m)
Utility Room

SECOND FLOOR

Landing
Bedroom 2: 17'1 x 13'0 (5.21m x 3.97m)

OUTSIDE

Driveway
Garage
Front Garden
Rear Garden



Main features

- A true one off!
- A stunning modern 4 double bedroom house built in 2022
- Open plan 27' kitchen/diner with bifold doors overlooking the garden
- Underfloor heating, en-suite shower room
- Remaining 7 years on build warranty, electric charge point for car



Nearest Schools

Primary Schools: Hilltop Primary, Wainscott Primary, Temple Mill Primary
Secondary Schools: The Rochester Grammar School for Girls, Sir Joseph Williamson Mathematical School for Boys, Strood Academy, Maritime Academy



Transport Information

Train Stations: Strood 0.9 miles, Rochester 1.6 miles, Chatham 2.0 miles



Address

Rolvenden Road, Wainscott, Rochester, Kent, ME2



Directions

For directions to this property please contact us.



Wards
Helping you move forwards

Call Strood Branch 01634 716597 ■ wardsofkent.co.uk



■ Legal advice should be taken to verify fixtures/fittings, planning, alterations and/or lease details ■ Appliances & services are untested, dimensions are approximate and floor plans are not to scale
■ Through a Homewise Home For Life Plan people aged 60+ can secure this property for up to 59% less, by purchasing a Lifetime Lease.



11846417/20250206/DV/JC