



Guide Price
£390,000

Freehold

4x  2x  2x 

**Baryntyne Crescent,
Hoo, Rochester, Kent,
ME3**

OVER 60?

Secure this property
for up to **59% less!**

Wards
Helping you move forwards



Main features

- Set in the popular Hoo village and backing onto fields
- 2 en-suite shower rooms, downstairs cloakroom
- Allocated parking for 2 cars
- Walk to local shops, public houses and the marina
- Easy access to transport links for the A2/M2 along with Medway Tunnel

Accommodation

GROUND FLOOR

Entrance Hall: 11'5 x 10'2 (3.48m x 3.10m)
 Cloakroom
 Lounge: 19'10 x 11'0 (6.05m x 3.36m)
 Dining Room : 9'10 x 8'8 (3.00m x 2.64m)
 Kitchen/Diner : 22'3 x 9'4 (6.79m x 2.85m) plus
 8'5 x 7'6 (2.57m x 2.29m)

FIRST FLOOR

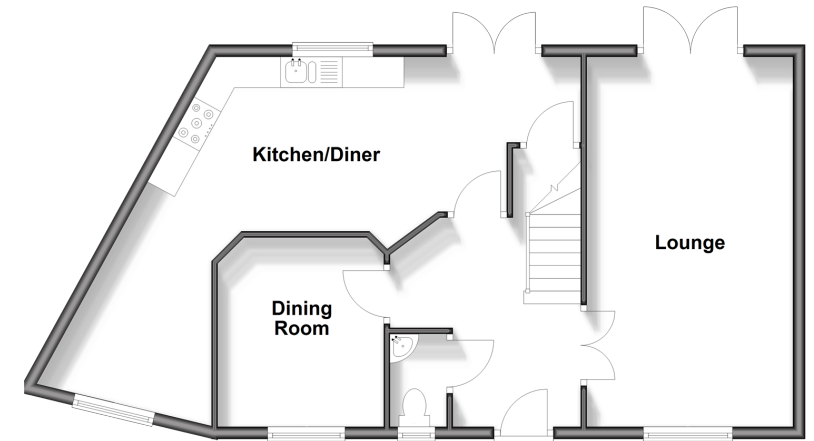
Landing
 Bedroom 1 : 12'9 x 9'8 (3.89m x 2.95m)
 En-Suite Shower Room : 6'10 x 6'3 (2.08m x 1.91m)
 Bedroom 2 : 12'0 x 11'2 (3.66m x 3.41m)
 En-Suite Shower Room : 7'4 x 5'3 (2.24m x 1.60m)
 Bedroom 3 : 13'5 x 9'2 (4.09m x 2.80m)
 Bedroom 4 : 10'5 x 7'8 (3.18m x 2.34m)
 Bathroom : 8'3 x 6'9 (2.52m x 2.06m)

OUTSIDE

Allocated Parking For 2 Cars
 Rear Garden

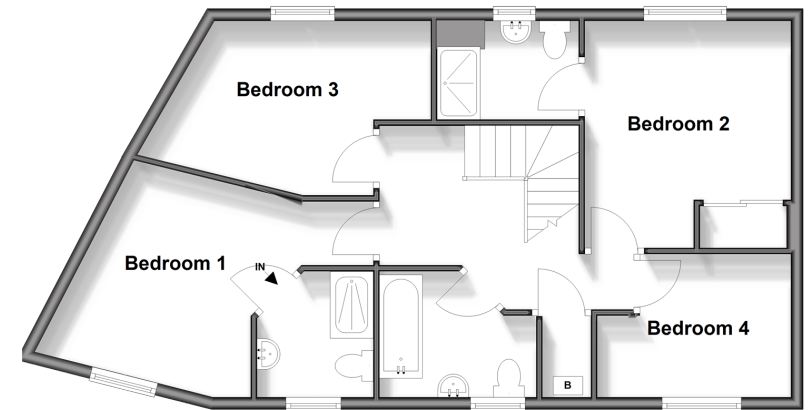
Ground Floor

Approx. 65.1 sq. metres (700.9 sq. feet)



First Floor

Approx. 66.5 sq. metres (715.3 sq. feet)



Call Strood - 01634 716597 ■ wardsof Kent.co.uk

- Legal advice should be taken to verify fixtures/fittings, planning, alterations and/or lease details
- Appliances & services are untested, dimensions are approximate and floor plans are not to scale
- Through a Homewise Home For Life Plan people aged 60+ can secure this property for up to 59% less, by purchasing a Lifetime Lease.



11846124/20250627/CM/CM