



**Price**  
**£350,000**

**Freehold**

3x  1x  2x 

**Sealand Drive, Strood,  
Rochester, Kent, ME2**

**OVER 60?**

Secure this property  
for up to **59% less!**

*Wards*  
Helping you move forwards



## Main features

- Sought after location close to green spaces and parks
- 2 allocated parking spaces to the front
- Modern renovations to include a new kitchen with integrated appliances
- Air conditioning units throughout and ceiling fans
- Amtico flooring and newly laid carpets upstairs
- Walk to the nearby Medway Valley Leisure Park which has restaurants, gym and bowling alley

## Accommodation

### GROUND FLOOR

Entrance Hall  
 Cloakroom  
 Lounge : 16'5 x 11'4 (5.01m x 3.46m)  
 Orangery : 14'6 x 8'0 (4.42m x 2.44m)  
 Kitchen : 14'9 x 9'1 (4.50m x 2.77m)

### FIRST FLOOR

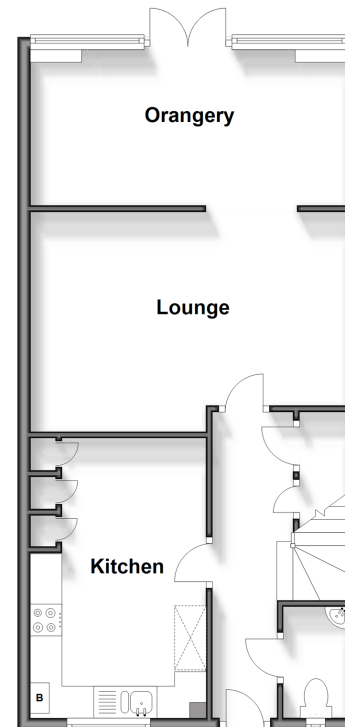
Landing  
 Bedroom 1 : 13'5 x 9'2 (4.09m x 2.80m)  
 Bedroom 2 : 12'5 x 9'2 (3.79m x 2.80m)  
 Bedroom 3 : 7'3 x 6'9 (2.21m x 2.06m)  
 Bathroom : 8'7 x 6'9 (2.62m x 2.06m)

### OUTSIDE

2 Allocated Parking Spaces  
 Rear Garden

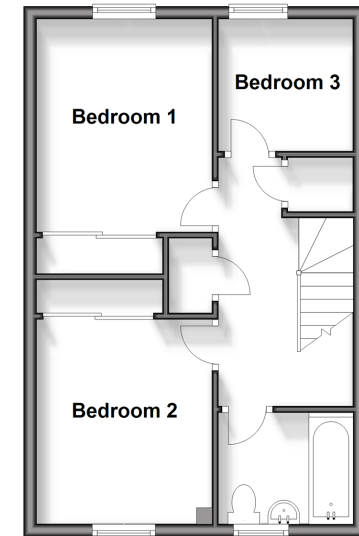
### Ground Floor

Approx. 52.6 sq. metres (566.2 sq. feet)



### First Floor

Approx. 39.7 sq. metres (427.8 sq. feet)



**Call Strood - 01634 716597 ■ [wardsof Kent.co.uk](http://wardsof Kent.co.uk)**

- Legal advice should be taken to verify fixtures/fittings, planning, alterations and/or lease details
- Through a Homewise Home For Life Plan people aged 60+ can secure this property for up to 59% less, by purchasing a Lifetime Lease.

- Appliances & services are untested, dimensions are approximate and floor plans are not to scale



11846307/20241001/DV/DM