



Price
£400,000

Freehold

2x  1x  2x 

**Broadwood Road,
Chattenden, Rochester,
Kent, ME3**

OVER 60?

Secure this property
for up to **59% less!**

Wards
Helping you move forwards



Main features

- A semi-detached 2 bedroom bungalow in a popular location
- Corner plot with in and out driveway
- Garage
- Offered for sale with no onward chain
- Located in close proximity to A2/M2 access and Medway Tunnel

Accommodation

GROUND FLOOR

Entrance Porch
Entrance Hall
Lounge/Family Area: 25'9 x 12'10 (7.85m x 3.91m)
Kitchen/Dining Area: 19'0 x 9'8 (5.80m x 2.95m)
Utility Room : 20'8 x 11'0 (6.30m x 3.36m)
Shower Room : 5'3 x 5'2 (1.60m x 1.58m)
Bedroom 1 : 13'0 x 10'11 (3.97m x 3.33m)
Bedroom 2 : 13'5 x 9'3 (4.09m x 2.82m)

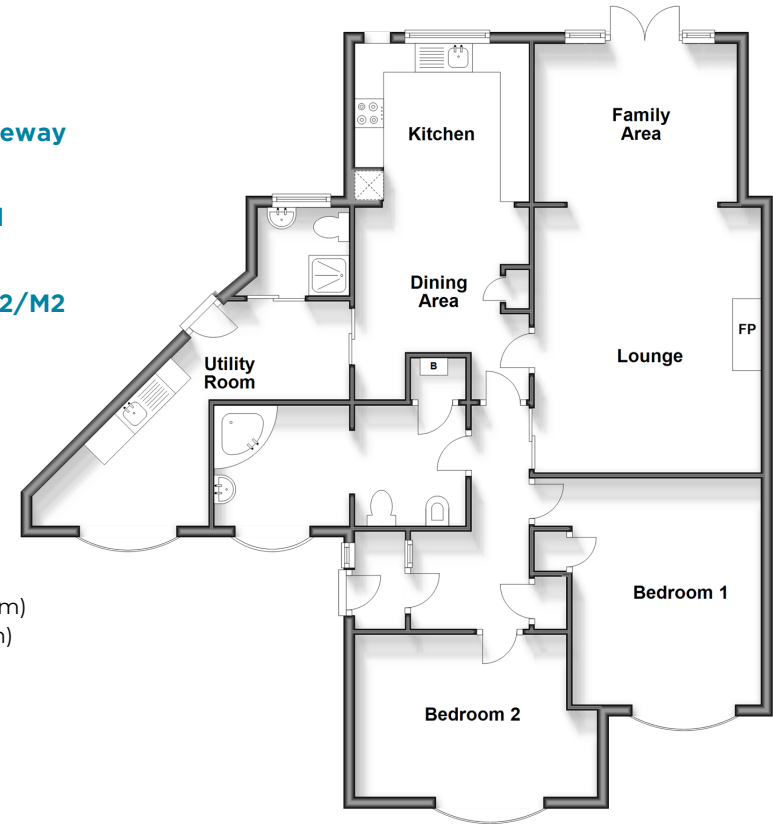
OUTBUILDING

Garage

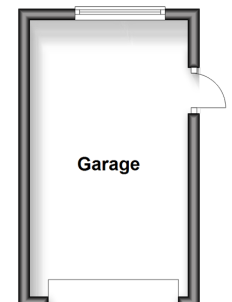
OUTSIDE

Driveway
Front Garden
Rear Garden

Ground Floor
Approx. 107.0 sq. metres (1151.4 sq. feet)



Outbuilding
Approx. 13.3 sq. metres (142.7 sq. feet)



Call Strood - 01634 716597 ■ wardsofkent.co.uk

- Legal advice should be taken to verify fixtures/fittings, planning, alterations and/or lease details
- Appliances & services are untested, dimensions are approximate and floor plans are not to scale
- Through a Homewise Home For Life Plan people aged 60+ can secure this property for up to 59% less, by purchasing a Lifetime Lease.