



Guide Price
£280,000

Freehold

3x  1x  2x 

**Quixote Crescent,
Frindsbury, Rochester,
Kent, ME2**

OVER 60?

Secure this property
for up to **59% less!**

Wards
Helping you move forwards



Main features

- Ideal first time buy or first family home
- Close to schools and amenities and open green spaces
- Sought after location with
- Great scope for modernisation
- Excellent transport links within a mile of transport links and railway station

Accommodation

GROUND FLOOR

Entrance Hall

Lounge: 12'9 x 11'7 (3.89m x 3.53m)

Dining Room: 9'11 x 8'11 (3.02m x 2.72m)

Kitchen: 9'9 x 9'1 (2.97m x 2.77m)

Utility Room: 9'8 x 5'11 (2.95m x 1.80m)

FIRST FLOOR

Landing

Bedroom 1: 12'8 x 9'5 (3.86m x 2.87m)

Bedroom 2: 11'9 x 9'0 (3.58m x 2.75m)

Bedroom 3: 9'4 x 7'9 (2.85m x 2.36m)

Bathroom: 5'6 x 5'5 (1.68m x 1.65m)

OUTSIDE

Front Garden

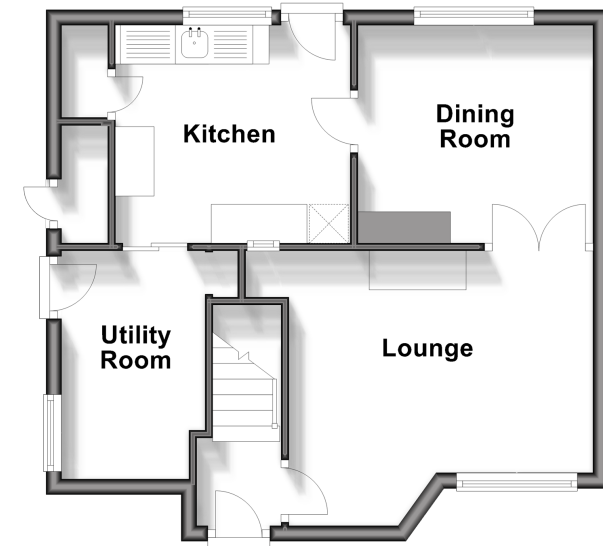
Rear Garden

Call Strood - 01634 716597 ■ wardsofkent.co.uk

- Legal advice should be taken to verify fixtures/fittings, planning, alterations and/or lease details
- Appliances & services are untested, dimensions are approximate and floor plans are not to scale
- Through a Homewise Home For Life Plan people aged 60+ can secure this property for up to 59% less, by purchasing a Lifetime Lease.

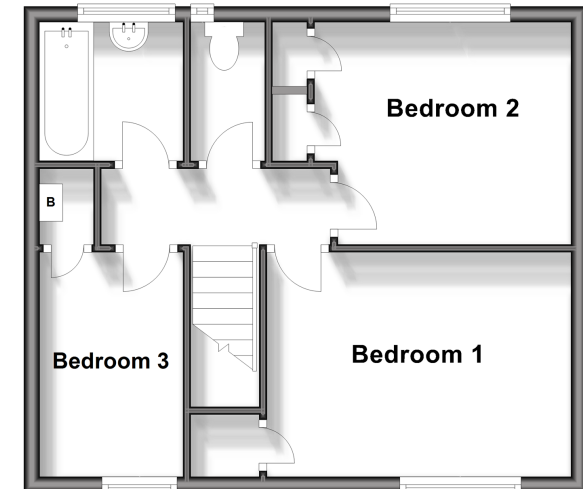
Ground Floor

Approx. 41.6 sq. metres (447.4 sq. feet)



First Floor

Approx. 40.0 sq. metres (431.0 sq. feet)



11843076/20240718/DV/DM