



Price
£575,000

Freehold

4x  2x  2x 

**Carisbrooke Road,
Strood, Rochester, Kent,
ME2**

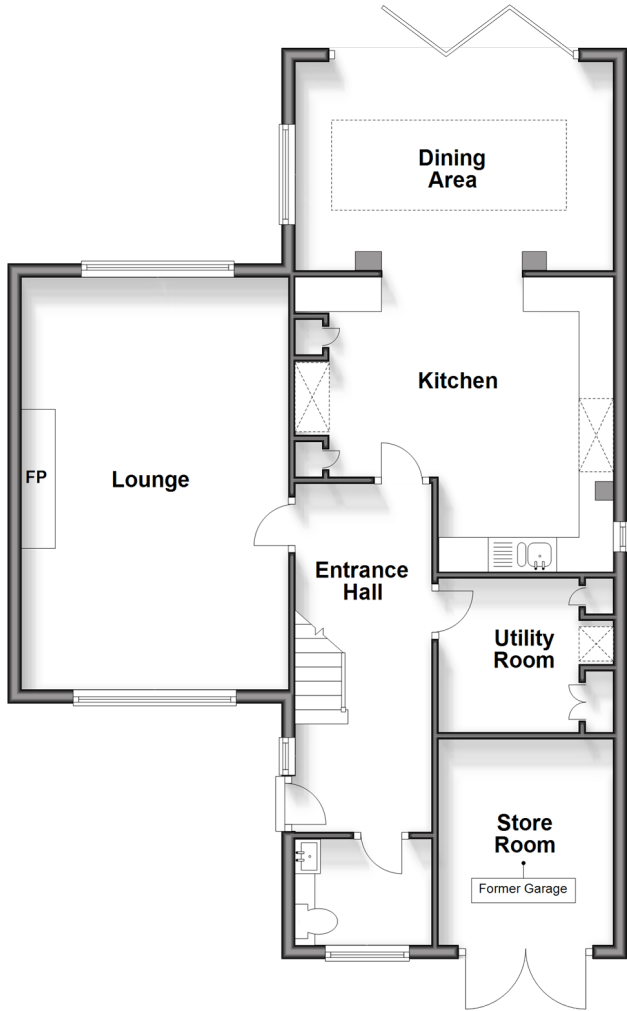
OVER 60?

Secure this property
for up to **59% less!**

Wards
Helping you move forwards

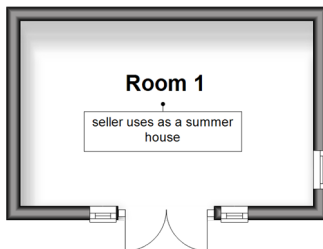
Split Level Ground Floor

Approx. 83.9 sq. metres (902.6 sq. feet)



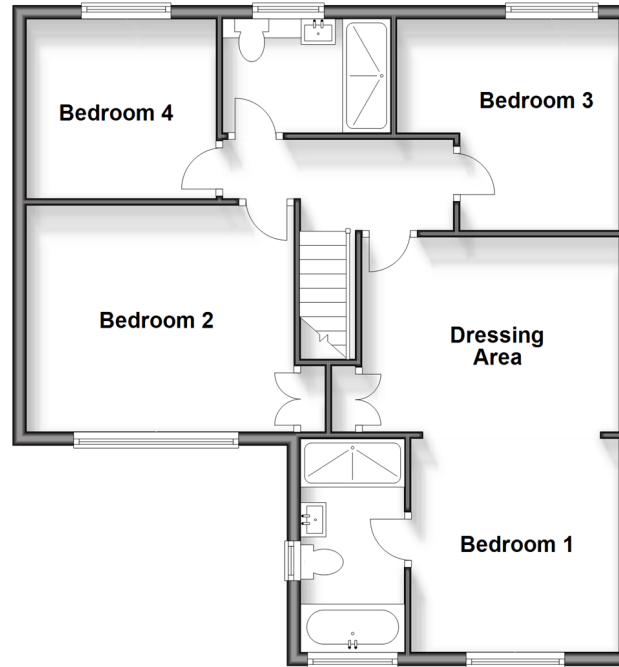
Outbuilding

Approx. 11.6 sq. metres (124.5 sq. feet)



First Floor

Approx. 66.9 sq. metres (719.8 sq. feet)



Outbuilding

Approx. 8.2 sq. metres (87.9 sq. feet)



Accommodation

SPLIT LEVEL GROUND FLOOR

Entrance Hall: 16'9 x 7'1 (5.11m x 2.16m)

Cloakroom: 8'0 x 5'7 (2.44m x 1.70m)

Lounge: 20'0 x 12'10 (6.10m x 3.91m)

Kitchen : 13'5 x 12'8 (4.09m x 3.86m)

Utility Room : 7'4 x 6'1 (2.24m x 1.86m)

Dining Area: 15'2 x 9'7 (4.63m x 2.92m)

FIRST FLOOR

Landing

Bedroom 1: 10'10 x 10'4 (3.30m x 3.15m)

Dressing Area: 11'7 x 9'1 (3.53m x 2.77m)

En-Suite Shower Room : 11'1 x 5'8 (3.38m x 1.73m)

Bedroom 2 : 13'0 x 11'1 (3.97m x 3.38m)

Bedroom 3: 10'8 x 10'6 (3.25m x 3.20m)

Bedroom 4: 8'9 x 8'9 (2.67m x 2.67m)

Bathroom

OUTBUILDING

Room 1 (Summer House)

Room 2 (Store Room)

OUTSIDE

Store Room (Former Garage)

Driveway

Rear Garden



Main features

- Extensively improved and modernised
- Main bedroom suite with dressing room and en-suite bathroom
- Established quiet location within easy access to A2/M2
- Within a mile of primary and secondary schools
- Tesco convenience store within walking distance
- Parking for several cars, detached store room, summer house and landscaped gardens

Nearest Schools

Primary Schools: Gordon Junior School, Temple Mill Primary, Elaine Primary
Secondary Schools: Abbey Court Community Special School 0.2 miles, Strood Academy, Gad's Hill School

Transport Information

Train Stations: Strood 1.6 miles, Rochester 2.3 miles, Chatham 2.4 miles

Address

Carisbrooke Road, Strood, Rochester, Kent, ME2

Directions

For directions to this property please contact us.



Wards
Helping you move forwards

Call Strood Branch 01634 716597 ■ wardsofkent.co.uk



■ Legal advice should be taken to verify fixtures/fittings, planning, alterations and/or lease details ■ Appliances & services are untested, dimensions are approximate and floor plans are not to scale
■ Through a Homewise Home For Life Plan people aged 60+ can secure this property for up to 59% less, by purchasing a Lifetime Lease.

EPC RATING CURRENT: C(70) POTENTIAL: B(84)

11846130/20240528/FA/JC