



**Price**  
**£400,000**

**Freehold**

3x  1x  2x 

**Banks Road, Strood,  
Rochester, Kent, ME2**

**OVER 60?**

Secure this property  
for up to **59% less!**

*Wards*  
Helping you move forwards



## Main features

- Offers over £400,000
- Stunning views from River Medway towards Rochester
- Close to Strood and Rochester town centres
- Main railway station to London within walking distance and Church Green park is opposite
- Downstairs cloakroom, lounge and dining room
- Potential to extend subject to the necessary planning permission being obtained
- Sought after location
- Driveway with space for 3 cars

## Accommodation

### GROUND FLOOR

Entrance Hall  
 Lounge : 16'2 x 11'7 (4.93m x 3.53m)  
 Dining Room : 12'5 x 10'5 (3.79m x 3.18m)  
 Kitchen : 9'2 x 7'2 (2.80m x 2.19m)  
 Cloakroom

### FIRST FLOOR

Landing  
 Bedroom 1: 16'9 x 11'1 (5.11m x 3.38m)  
 Bedroom 2: 12'5 x 11'0 (3.79m x 3.36m)  
 Bedroom 3: 9'1 x 7'5 (2.77m x 2.26m)  
 Bathroom : 7'4 x 5'6 (2.24m x 1.68m)  
 Toilet

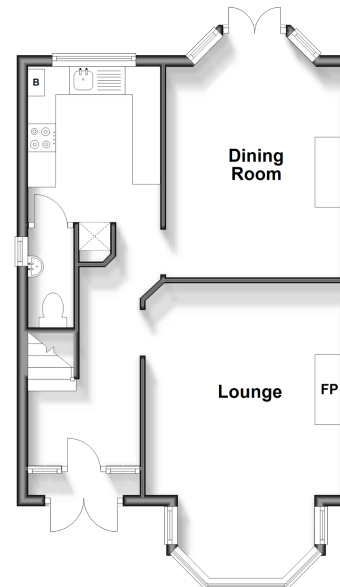
### OUTBUILDING

Garage: 21'5 x 8'4 (6.53m x 2.54m)

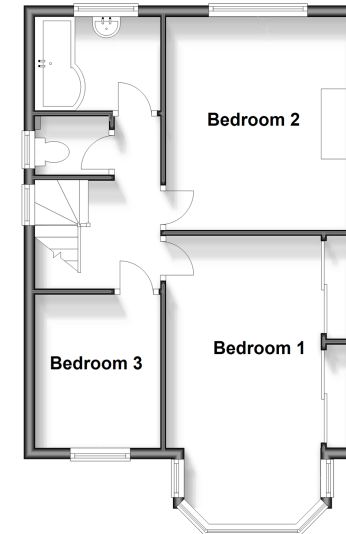
### OUTSIDE

Driveway  
 Front Garden  
 Rear Garden

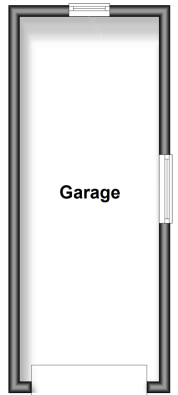
**Ground Floor**  
 Approx. 46.8 sq. metres (503.4 sq. feet)



**First Floor**  
 Approx. 46.0 sq. metres (495.6 sq. feet)



**Outbuilding**  
 Approx. 16.4 sq. metres (176.9 sq. feet)



**Call Strood - 01634 716597 ■ wardsof Kent.co.uk**

■ Legal advice should be taken to verify fixtures/fittings, planning, alterations and/or lease details  
 ■ Through a Homewise Home For Life Plan people aged 60+ can secure this property for up to 59% less, by purchasing a Lifetime Lease.

■ Appliances & services are untested, dimensions are approximate and floor plans are not to scale



11844483/20240905/DV/JC