



Guide Price
£450,000

Freehold

4x  2x  2x 

**North Road, Cliffe,
Rochester, Kent, ME3**

OVER 60?

Secure this property
for up to **59% less!**

Wards
Helping you move forwards



Main features

- A great family home with extended accommodation
- Stunning 25' open plan lounge with bi-fold doors
- Backing onto Cliffe marshes with views towards River Thames
- 18' modern kitchen and utility room
- Village location and quiet cul-de-sac position
- Electric charge point for car, summer house
- En-suite shower room, 4 double bedrooms, log burner fire

Accommodation

GROUND FLOOR

Entrance Porch
 Entrance Hall
 Cloakroom
 Kitchen : 18'5 x 11'2 (5.62m x 3.41m)
 Utility Room : 6'2 x 5'3 (1.88m x 1.60m)
 Lounge : 25'1 x 11'4 (7.65m x 3.46m)
 Dining Area: 16'7 x 10'9 (5.06m x 3.28m)

FIRST FLOOR

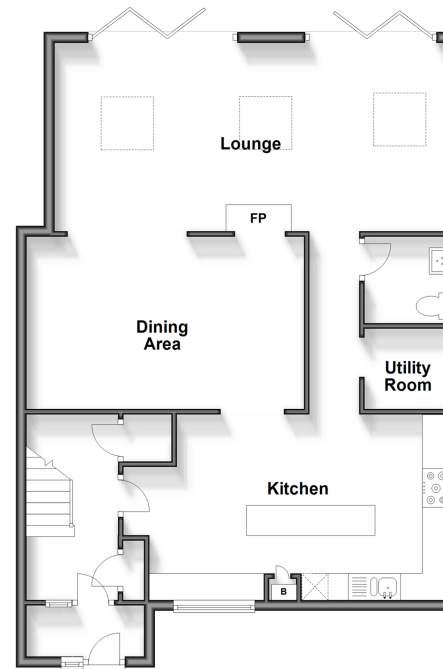
Landing
 Bedroom 1 : 10'6 x 10'4 (3.20m x 3.15m)
 En-Suite Shower Room : 6'0 x 4'7 (1.83m x 1.40m)
 Bedroom 2: 12'0 x 8'6 (3.66m x 2.59m)
 Bedroom 3: 10'5 x 8'7 (3.18m x 2.62m)
 Bedroom 4: 9'4 x 9'0 (2.85m x 2.75m)
 Bathroom : 6'10 x 5'5 (2.08m x 1.65m)

OUTSIDE

Driveway
 Summer house
 Front Garden
 Rear Garden

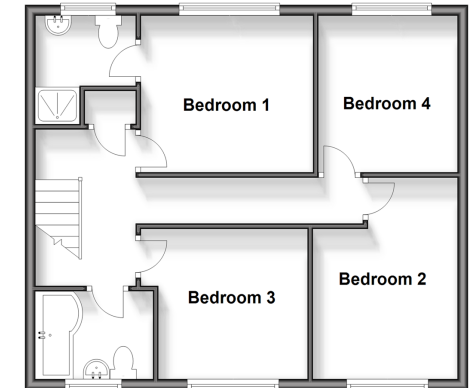
Ground Floor

Approx. 85.4 sq. metres (919.1 sq. feet)



First Floor

Approx. 55.4 sq. metres (596.4 sq. feet)



Call Strood - 01634 716597 ■ wardsofkent.co.uk

- Legal advice should be taken to verify fixtures/fittings, planning, alterations and/or lease details
- Through a Homewise Home For Life Plan people aged 60+ can secure this property for up to 59% less, by purchasing a Lifetime Lease.

- Appliances & services are untested, dimensions are approximate and floor plans are not to scale



11845957/20240606/JC/JC