



Guide Price
£325,000

Freehold

2x  1x  1x 

**Romsey Close, Strood,
Rochester, Kent, ME2**

OVER 60?

Secure this property
for up to **59% less!**

Wards
Helping you move forwards



Main features

- Nestled in a quiet cul-de-sac
- Perfect for those downsizing or starting a new chapter
- Tranquil surroundings and picturesque fields nearby
- Garage and driveway for convenience of parking
- Close to schools, amenities and transport links

Accommodation

GROUND FLOOR

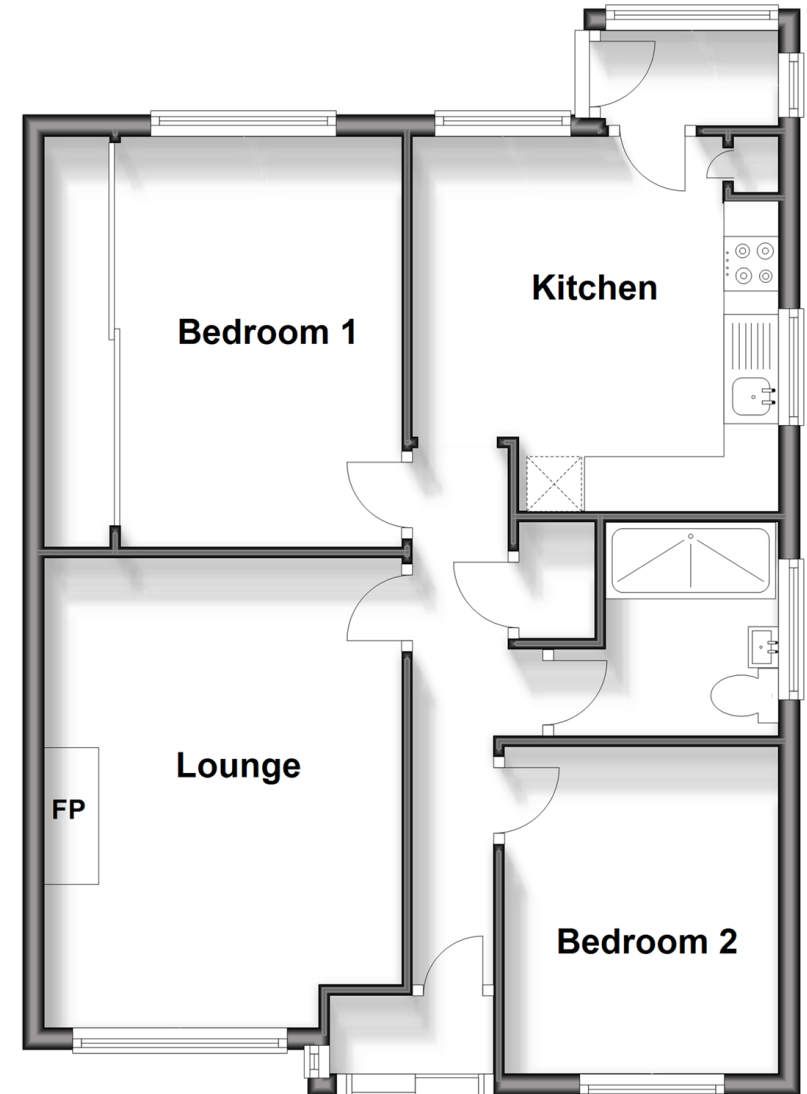
- Entrance Porch
- Entrance Hall
- Lounge : 14'0 x 10'8 (4.27m x 3.25m)
- Kitchen : 11'0 x 10'11 (3.36m x 3.33m)
- Rear Lobby
- Bedroom 1: 12'2 x 11'10 (3.71m x 3.61m)
- Bedroom 2: 9'9 x 8'5 (2.97m x 2.57m)
- Shower Room : 6'9 x 6'3 (2.06m x 1.91m)

OUTSIDE

- Driveway
- Garage
- Front Garden
- Rear Garden

Ground Floor

Approx. 58.1 sq. metres (625.8 sq. feet)



Call Strood - 01634 716597 ■ wardsofkent.co.uk

- Legal advice should be taken to verify fixtures/fittings, planning, alterations and/or lease details
- Appliances & services are untested, dimensions are approximate and floor plans are not to scale
- Through a Homewise Home For Life Plan people aged 60+ can secure this property for up to 59% less, by purchasing a Lifetime Lease.



11846027 / 20241023 / DM / DM