



**Guide Price**  
**£450,000**

**Freehold**

3x  2x  2x 

Allhallows Road, Lower  
Stoke, Rochester, Kent,  
ME3

**OVER 60?**

Secure this property  
for up to **59% less!**

*Wards*  
Helping you move forwards



## Main features

- Village location backing onto fields
- Extended detached house dated back to 1913
- Stunning kitchen/breakfast room overlooking garden to the rear
- Driveway for several cars and garage
- En-suite shower room, downstairs utility and cloakroom
- Large garden ideal for relaxing and entertaining
- Local village shop, takeaway and public house within 10 minutes walk

## Accommodation

### GROUND FLOOR

Entrance Hall  
 Lounge : 13'8 x 11'0 (4.17m x 3.36m)  
 Dining Area: 13'4 x 12'0 (4.07m x 3.66m)  
 Kitchen/Breakfast Room: 17'7 x 15'9 (5.36m x 4.80m)  
 Utility/Cloakroom : 8'6 x 5'1 (2.59m x 1.55m)  
 Study : 8'4 x 7'0 (2.54m x 2.14m)

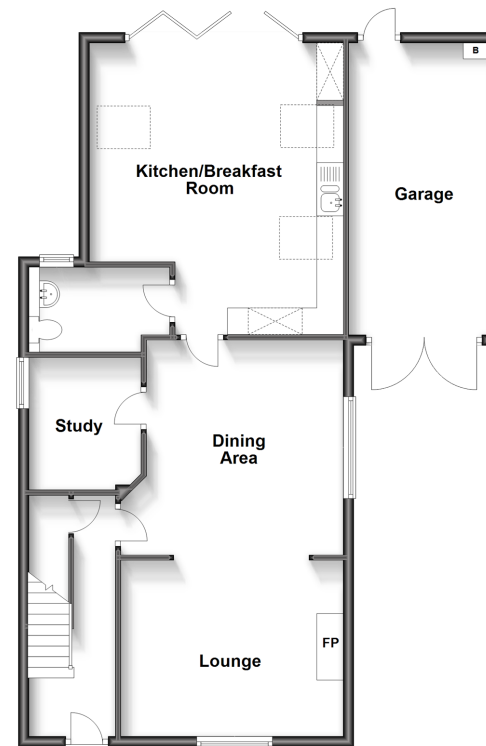
### FIRST FLOOR

Landing  
 Bedroom 1: 15'7 x 11'0 (4.75m x 3.36m)  
 En-Suite Shower room : 5'2 x 5'0 (1.58m x 1.53m)  
 Bedroom 2: 13'4 x 8'4 (4.07m x 2.54m)  
 Bedroom 3: 10'10 x 8'0 (3.30m x 2.44m)  
 Bathroom : 7'10 x 5'3 (2.39m x 1.60m)

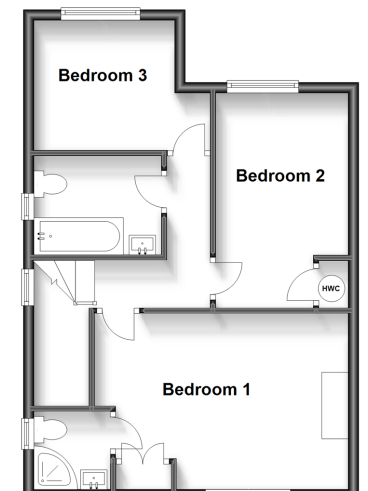
### OUTSIDE

Driveway  
 Garage : 17'9 x 8'10 (5.41m x 2.69m)  
 Rear Garden

**Ground Floor**  
 Approx. 87.7 sq. metres (943.7 sq. feet)



**First Floor**  
 Approx. 47.7 sq. metres (513.8 sq. feet)



**Call Strood - 01634 716597 ■ wardsofkent.co.uk**

- Legal advice should be taken to verify fixtures/fittings, planning, alterations and/or lease details
- Through a Homewise Home For Life Plan people aged 60+ can secure this property for up to 59% less, by purchasing a Lifetime Lease.

- Appliances & services are untested, dimensions are approximate and floor plans are not to scale



11830280/20231026/DM/JC