



**Price**  
**£700,000**

**Freehold**

4x  3x  2x 

**Blossom Way, Marden,  
Tonbridge, Kent, TN12**

*Wards*  
Helping you move forwards





## Main features

- Beautifully presented detached house
- Double garage and ample parking on the driveway
- Family bathroom, en-suite shower room and downstairs cloakroom
- Light, spacious kitchen with separate utility room and dining room
- Walking distance to local primary school, shops, mainline train station and amenities

## Accommodation

### GROUND FLOOR

#### Entrance Hall

Living Room : 18'3 x 11'8 (5.57m x 3.56m)

Kitchen: 18'3 x 14'5 (5.57m x 4.40m)

#### Utility Room

Dining Room : 12'7 x 9'10 (3.84m x 3.00m)

Cloakroom: 5'10 x 4'5 (1.78m x 1.35m)

### FIRST FLOOR

#### Landing

Bedroom 1: 13'1 x 10'5 (3.99m x 3.18m)

En-suite Shower Room: 10'5 x 4'8 (3.18m x 1.42m)

Bedroom 2: 12'7 x 9'10 (3.84m x 3.00m)

Bedroom 3: 11'8 x 9'2 (3.56m x 2.80m)

Bedroom 4: 11'8 x 8'7 (3.56m x 2.62m)

Bathroom: 8'8 x 7'5 (2.64m x 2.26m)

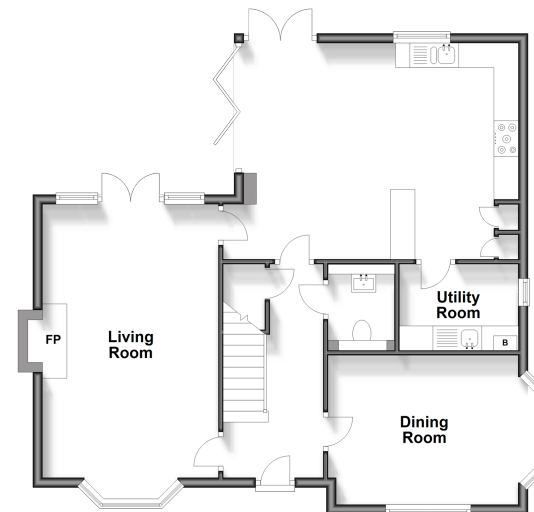
### OUTSIDE

Front and Rear Gardens

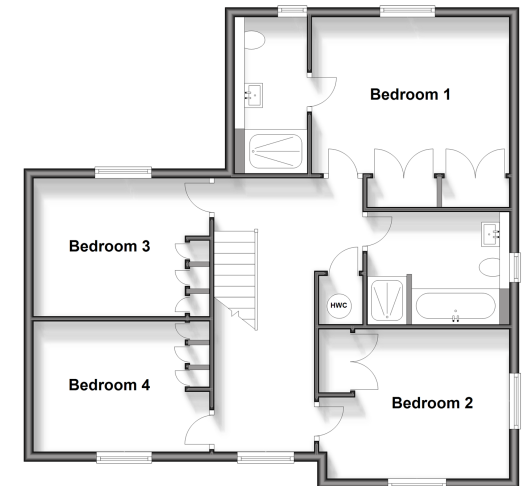
Large Driveway

Double Garage

**Ground Floor**  
Approx. 75.7 sq. metres (814.9 sq. feet)



**First Floor**  
Approx. 75.2 sq. metres (809.2 sq. feet)



**Call Staplehurst - 01580 893322 ■ wardsof Kent.co.uk**

■ Legal advice should be taken to verify fixtures/fittings, planning, alterations and/or lease details

■ Appliances & services are untested, dimensions are approximate and floor plans are not to scale



13923261/20241101/JG1/CG