



Guide Price
£550,000

Freehold

4x  2x  1x 

**Tippen Way, Marden,
Tonbridge, Kent, TN12**

OVER 60?

Secure this property
for up to **59% less!**

Wards
Helping you move forwards



Main features

- Beautifully presented house with solar panels in popular Redrow development
- Garage with electric door and off road parking
- Rear garden with patio area
- Separate lounge and kitchen diner at the rear, leading out to the garden
- Walkable to local amenities and train station

Accommodation

GROUND FLOOR

Entrance Hall
 Kitchen: 19'2 x 12'10 (5.85m x 3.91m)
 Lounge: 18'4 x 11'3 (5.59m x 3.43m)
 Cloakroom

FIRST FLOOR

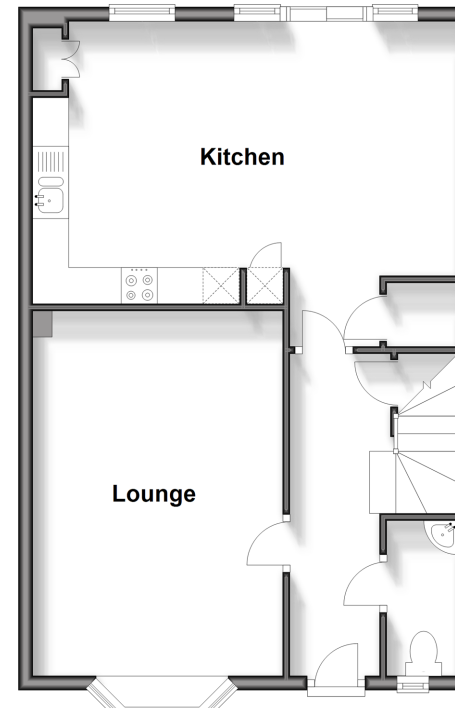
Landing
 Bedroom 1: 13'0 x 10'3 (3.97m x 3.13m)
 En-Suite Shower Room
 Bedroom 2: 11'10 x 9'5 (3.61m x 2.87m)
 Bedroom 3: 9'7 x 8'6 (2.92m x 2.59m)
 Bedroom 4: 7'4 x 6'8 (2.24m x 2.03m)
 Bathroom : 6'0 x 5'6 (1.83m x 1.68m)

OUTSIDE

Front and Rear Garden
 Driveway and Garage

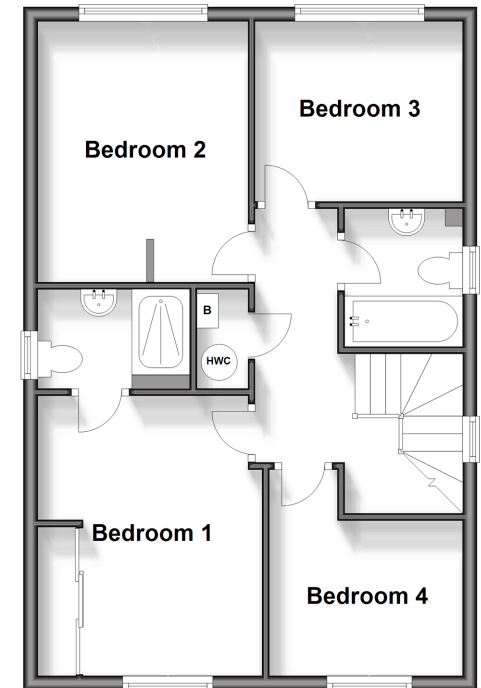
Ground Floor

Approx. 53.7 sq. metres (578.1 sq. feet)



First Floor

Approx. 53.5 sq. metres (575.8 sq. feet)



Call Staplehurst - 01580 893322 ■ wardsof Kent.co.uk

■ Legal advice should be taken to verify fixtures/fittings, planning, alterations and/or lease details
 ■ Through a Homewise Home For Life Plan people aged 60+ can secure this property for up to 59% less, by purchasing a Lifetime Lease.

■ Appliances & services are untested, dimensions are approximate and floor plans are not to scale



13923158/20240612/KA/KA