



Guide Price
£400,000

Freehold

3x  1x  1x 

**Brook Cottages, Green
Lane, Marden, Kent,
TN12**

OVER 60?

Secure this property
for up to **59% less!**

Wards
Helping you move forwards



Main features

- Charming terraced cottage over 3 floors
- Open plan kitchen/diner with feature fireplace
- Large mature rear garden with summer house
- Stunning location with countryside views
- Off road parking for two cars

Accommodation

GROUND FLOOR

Lounge: 12'11 x 11'10 (3.94m x 3.61m)
 Kitchen/Diner: 19'6 x 10'2 (5.95m x 3.10m)
 Bathroom: 7'10 x 5'1 (2.39m x 1.55m)

FIRST FLOOR

Landing
 Bedroom 1: 12'6 x 11'4 (3.81m x 3.46m)
 Bedroom 2: 11'4 x 10'2 (3.46m x 3.10m)

SECOND FLOOR

Bedroom 3: 11'6 x 11'5 (3.51m x 3.48m)

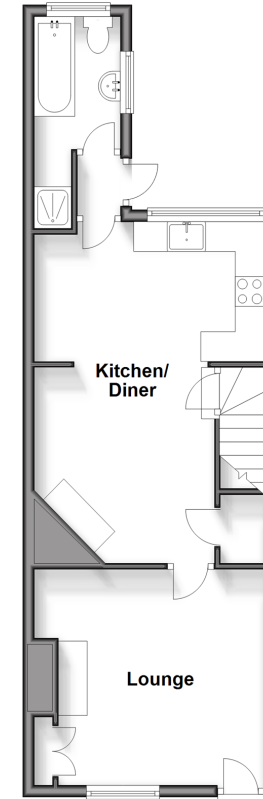
OUTSIDE

Front and Rear Garden
 Off road parking for two cars
 Summer House

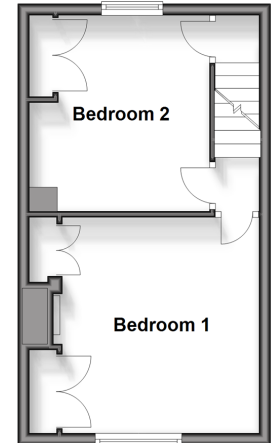
Call Staplehurst - 01580 893322 ■ wardsofkent.co.uk

- Legal advice should be taken to verify fixtures/fittings, planning, alterations and/or lease details
- Appliances & services are untested, dimensions are approximate and floor plans are not to scale
- Through a Homewise Home For Life Plan people aged 60+ can secure this property for up to 59% less, by purchasing a Lifetime Lease.

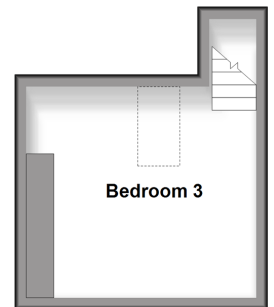
Ground Floor
 Approx. 42.8 sq. metres (460.2 sq. feet)



First Floor
 Approx. 27.9 sq. metres (300.3 sq. feet)



Second Floor
 Approx. 15.0 sq. metres (161.6 sq. feet)



13923163/20241104/MH/KA