



Price
£585,000

Freehold

4x  2x  2x 

**Russell Road, Marden,
Tonbridge, Kent, TN12**

OVER 60?

Secure this property
for up to **59% less!**

Wards
Helping you move forwards



Main features

- Well presented house in popular Redrow development
- Sunny garden with summer house and decking area
- Fitted kitchen with integrated appliances and convenient utility room
- Ideal for commuters with close proximity to mainline station

Accommodation

GROUND FLOOR

Hallway
 Kitchen/Diner: 25'1 x 12'11 (7.65m x 3.94m)
 Utility: 6'6 x 5'8 (1.98m x 1.73m)
 Lounge: 16'9 x 11'10 (5.11m x 3.61m)
 Cloakroom

FIRST FLOOR

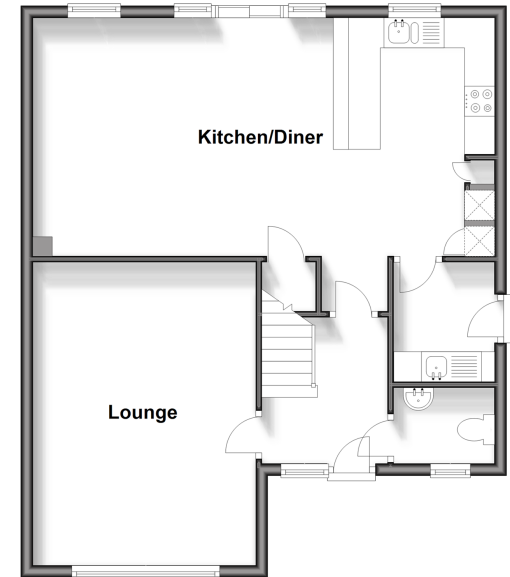
Landing
 Bedroom 1: 13'9 x 12'1 (4.19m x 3.69m)
 En-Suite Shower Room
 Bedroom 2: 13'5 x 10'9 (4.09m x 3.28m)
 Bedroom 3: 11'9 x 9'10 (3.58m x 3.00m)
 Bedroom 4: 9'0 x 7'6 (2.75m x 2.29m)
 Bathroom: 10'8 x 5'9 (3.25m x 1.75m)

OUTSIDE

Garage and Driveway
 Rear Garden with Decking
 Summer House: 8'0 x 5'11 (2.44m x 1.80m)

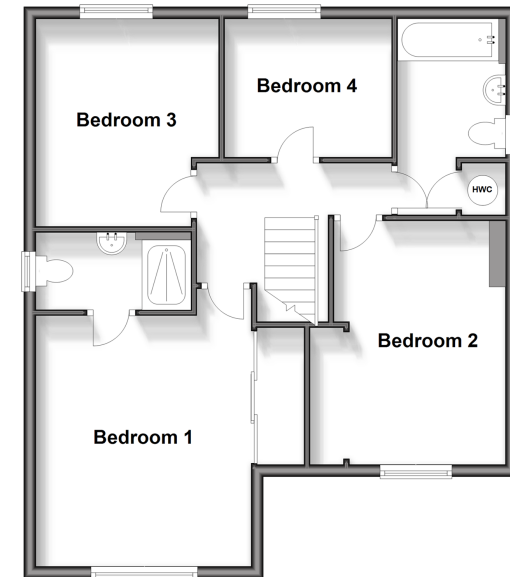
Ground Floor

Approx. 63.1 sq. metres (679.5 sq. feet)



First Floor

Approx. 63.9 sq. metres (687.9 sq. feet)



Call Staplehurst - 01580 893322 ■ wardsof Kent.co.uk

- Legal advice should be taken to verify fixtures/fittings, planning, alterations and/or lease details
- Appliances & services are untested, dimensions are approximate and floor plans are not to scale
- Through a Homewise Home For Life Plan people aged 60+ can secure this property for up to 59% less, by purchasing a Lifetime Lease.



13922633/20240513/KA/KA