



Price
£950,000

Freehold

5x  2x  3x 

**Sheephurst Lane,
Marden, Tonbridge,
Kent, TN12**

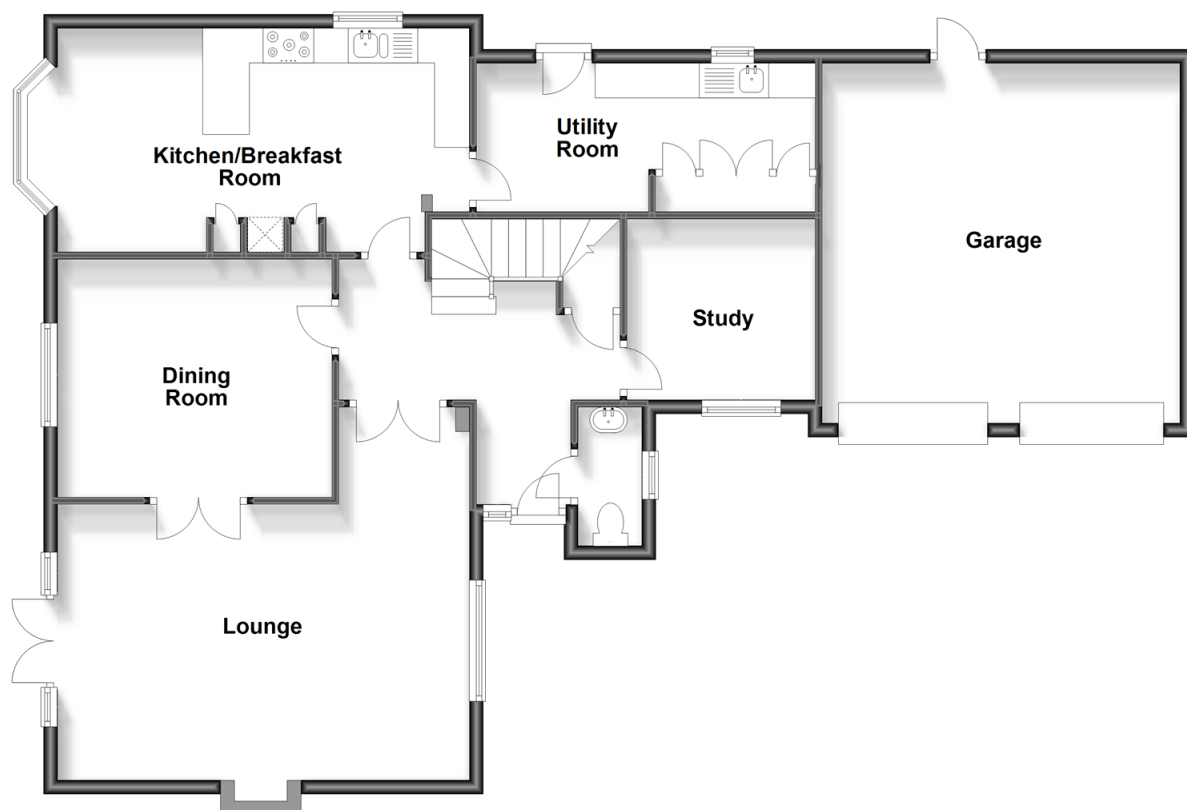
OVER 60?

Secure this property
for up to **59% less!**

Wards
Helping you move forwards

Ground Floor

Approx. 120.2 sq. metres (1293.3 sq. feet)



First Floor

Approx. 88.8 sq. metres (955.8 sq. feet)



Accommodation

GROUND FLOOR

Entrance Hall

Lounge: 20'7 x 13'0 (6.28m x 3.97m)

Dining Room: 12'10 x 11'2 (3.91m x 3.41m)

Kitchen/Breakfast Room: 21'8 x 10'6 (6.61m x 3.20m)

Utility Room: 15'11 x 7'0 (4.85m x 2.14m)

Study: 8'10 x 8'6 (2.69m x 2.59m)

Cloakroom: 6'4 x 3'0 (1.93m x 0.92m)

FIRST FLOOR

Landing

Bedroom 1: 17'4 x 12'0 (5.29m x 3.66m)

En-Suite Bathroom: 8'11 x 0'0 (2.72m x 0.00m)

Bedroom 2: 13'0 x 10'0 (3.97m x 3.05m)

Bedroom 3: 10'1 x 9'10 (3.08m x 3.00m)

Bedroom 4: 9'8 x 9'1 (2.95m x 2.77m)

Bedroom 5: 9'0 x 8'6 (2.75m x 2.59m)

OUTSIDE

Landscaped gardens and paddock

Driveway and double garage

Outbuildings



Main features

- Beautifully presented family house
- Extensive landscaped gardens and paddock
- Multiple out buildings including home office
- Grand main bedroom suite with walk in wardrobe and en-suite
- Double garage and driveway, can easily fit three cars



Nearest Schools

Primary Schools: Marden Primary 0.8 miles, St Margaret's, Collier Street C of E Voluntary Controlled School 2.3 miles, Horsmonden Primary 2.8 miles
Secondary Schools: Bethany School 1.7 miles, Mascalls School 4.2 miles, High Weald Academy 4.6 miles



Transport Information

Train Stations: Marden 1.0 miles, Staplehurst 2.9 miles, Paddock Wood 4.3 miles



Address

Sheephurst Lane, Marden, Tonbridge, Kent, TN12



Directions

For directions to this property please contact us.



Wards
Helping you move forwards

Call Staplehurst Branch 01580 893322 ■ wardsofkent.co.uk



■ Legal advice should be taken to verify fixtures/fittings, planning, alterations and/or lease details ■ Appliances & services are untested, dimensions are approximate and floor plans are not to scale
■ Through a Homewise Home For Life Plan people aged 60+ can secure this property for up to 59% less, by purchasing a Lifetime Lease.



13922952/20240207/JG1/JW