



**Price**  
**£550,000**

**Freehold**

4x  2x  1x 

**Challenger Way,  
Marden, Tonbridge,  
Kent, TN12**

**OVER 60?**

Secure this property  
for up to **59% less!**

*Wards*  
Helping you move forwards





## Main features

- Well presented house with approximately 7 years NHBC
- Situated within popular Redrow development
- Main bedroom with en-suite shower room
- Large private garden with patio area
- Spacious kitchen diner with utility room

## Accommodation

### GROUND FLOOR

Entrance Hall

Kitchen/Diner: 15'4 x 13'10 (4.68m x 4.22m)

Lounge: 17'4 x 11'2 (5.29m x 3.41m)

Cloakroom: 5'7 x 3'6 (1.70m x 1.07m)

### FIRST FLOOR

Landing

Bedroom 1: 12'11 x 11'2 (3.94m x 3.41m)

En-suite Shower Room: 6'10 x 5'0 (2.08m x 1.53m)

Bedroom 2: 10'6 x 8'11 (3.20m x 2.72m)

Bedroom 3: 10'2 x 8'6 (3.10m x 2.59m)

Bedroom 4: 10'10 x 10'6 (3.30m x 3.20m)

Bathroom: 7'5 x 6'6 (2.26m x 1.98m)

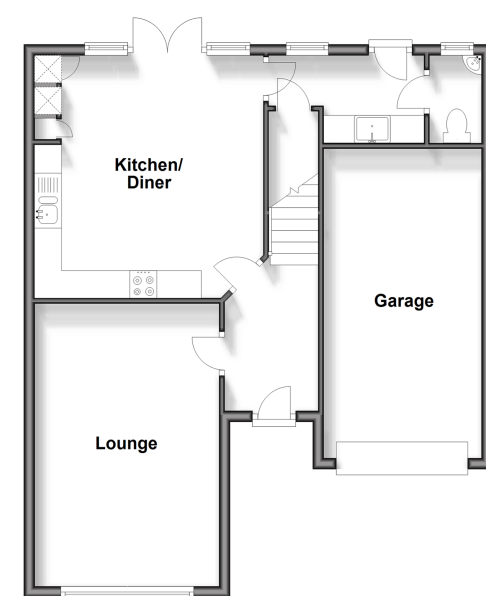
### OUTSIDE

Integral Garage

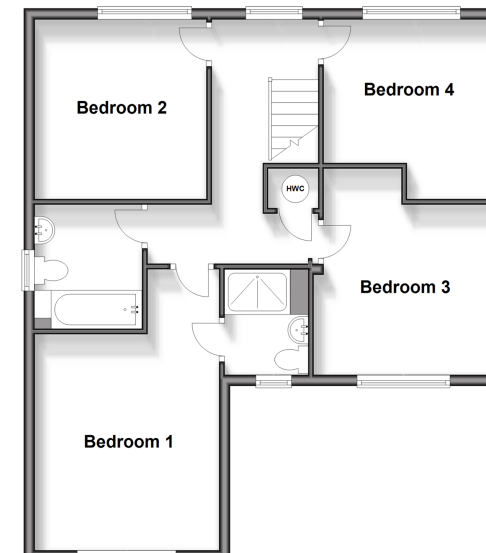
Large Driveway

Front and Rear Garden

**Ground Floor**  
Approx. 66.9 sq. metres (719.8 sq. feet)



**First Floor**  
Approx. 65.8 sq. metres (708.0 sq. feet)



**Call Staplehurst - 01580 893322 ■ [wardsofkent.co.uk](http://wardsofkent.co.uk)**

- Legal advice should be taken to verify fixtures/fittings, planning, alterations and/or lease details
- Appliances & services are untested, dimensions are approximate and floor plans are not to scale
- Through a Homewise Home For Life Plan people aged 60+ can secure this property for up to 59% less, by purchasing a Lifetime Lease.



13923059/20231211/CG/MF