



Price
£600,000

Freehold

4x  1x  1x 

**The Copse, Howland
Road, Marden,
Tonbridge, Kent, TN12**

OVER 60?

Secure this property
for up to **59% less!**

Wards
Helping you move forwards



Main features

- Well presented extended house
- Converted old police house
- One bedroom Annexe
- Large plot with extensive parking and garage
- Immaculate front and rear gardens

Accommodation

GROUND FLOOR

Entrance Hall

Kitchen: 11'10 x 9'1 (3.61m x 2.77m)

Utility Room: 9'7 x 5'10 (2.92m x 1.78m)

Dining Room: 11'10 x 9'10 (3.61m x 3.00m)

Lounge: 13'0 x 12'11 (3.97m x 3.94m)

Cloakroom

Family Room: 16'8 x 11'9 (5.08m x 3.58m)

FIRST FLOOR

Landing

Bedroom 1: 11'10 x 10'11 (3.61m x 3.33m)

Bedroom 2: 13'1 x 10'6 (3.99m x 3.20m)

Bedroom 3: 9'8 x 8'9 (2.95m x 2.67m)

Bathroom: 7'3 x 6'5 (2.21m x 1.96m)

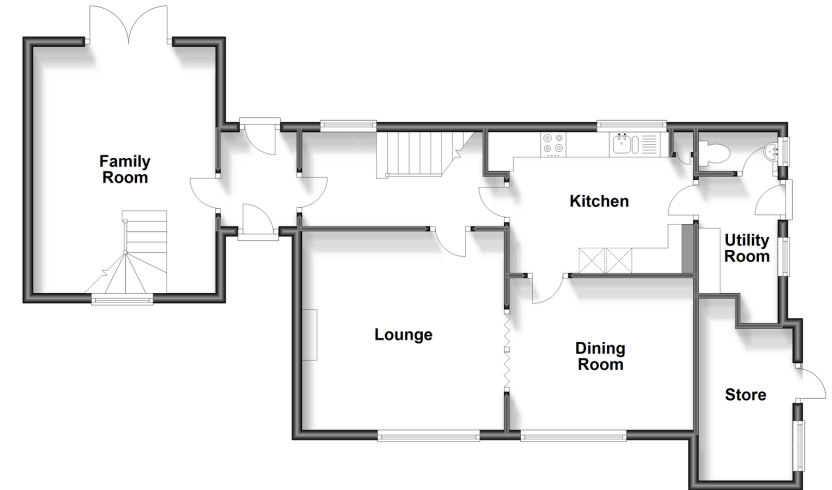
Bedroom 4: 12'7 x 11'10 (3.84m x 3.61m)

OUTSIDE

Front and Rear Garden

Large Driveway

Ground Floor
Approx. 78.8 sq. metres (848.2 sq. feet)



First Floor
Approx. 60.4 sq. metres (650.3 sq. feet)



Call Staplehurst - 01580 893322 ■ wardsofkent.co.uk

- Legal advice should be taken to verify fixtures/fittings, planning, alterations and/or lease details
- Appliances & services are untested, dimensions are approximate and floor plans are not to scale
- Through a Homewise Home For Life Plan people aged 60+ can secure this property for up to 59% less, by purchasing a Lifetime Lease.



13922713/20230913/JG1/JG