



Price

£230,000

Leasehold

2x  2x  1x 

**Conveyor House,
Conveyor Drive, Halling,
Rochester, Kent, ME2**

OVER 60?

Secure this property
for up to **59% less!**

Wards
Helping you move forwards



Main features

- Luxurious ground floor apartment situated in St Andrews Park
- High specification with integrated appliances and fitted blinds
- En-suite shower room and separate bathroom
- Extremely light with a fantastic open plan layout
- Convenient allocated parking space

Accommodation

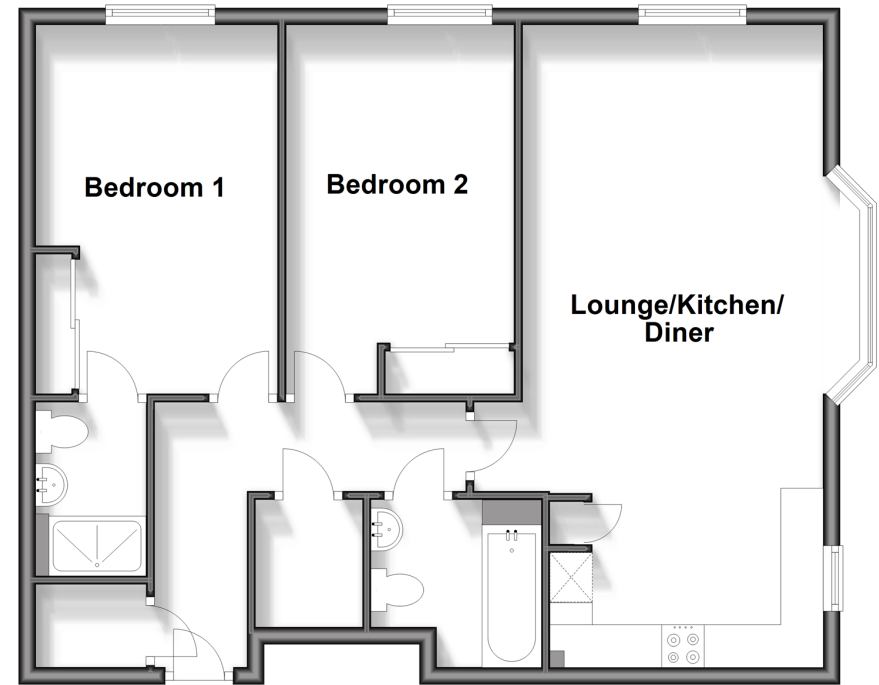
GROUND FLOOR

- Entrance Hall
- Lounge/Kitchen/Diner: 24'7 x 11'7 (7.50m x 3.53m)
- Bedroom 1: 14'2 x 9'3 (4.32m x 2.82m)
- En-Suite Shower Room
- Bedroom 2: 14'2 x 8'9 (4.32m x 2.67m)
- Bathroom

OUTSIDE

- Allocated Parking Space

Ground Floor
Approx. 69.2 sq. metres (745.1 sq. feet)



Call Snodland - 01634 245055 ■ wardsofKent.co.uk

■ Legal advice should be taken to verify fixtures/fittings, planning, alterations and/or lease details
 ■ Through a Homewise Home For Life Plan people aged 60+ can secure this property for up to 59% less, by purchasing a Lifetime Lease.

■ Appliances & services are untested, dimensions are approximate and floor plans are not to scale



13821615/20240625/MM/LK