



**Price**  
**£375,000**

**Freehold**

3x  2x  1x 

**Amisse Drive, Snodland,  
Kent, ME6**

**OVER 60?**

Secure this property  
for up to **59% less!**

*Wards*  
Helping you move forwards



## Main features

- Immaculately presented house on the prestigious Holborough Lakes
- Handy carport with double storage and parking right next to the house
- Amazing size kitchen where you can let your taste buds flow
- Cloakroom, family bathroom and en-suite shower room
- Excellent size private garden

## Accommodation

### GROUND FLOOR

- Entrance Hall
- Cloakroom
- Kitchen: 12'3 x 8'2 (3.74m x 2.49m)
- Lounge/Diner: 17'2 x 15'6 (5.24m x 4.73m)

### FIRST FLOOR

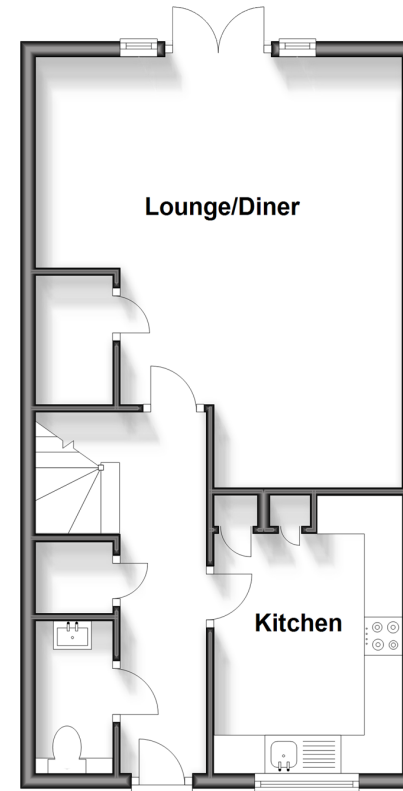
- Landing
- Bedroom 1: 11'10 x 10'9 (3.61m x 3.28m)
- En-Suite Shower Room
- Balcony
- Bedroom 2: 10'6 x 8'4 (3.20m x 2.54m)
- Bedroom 3: 7'11 x 6'7 (2.41m x 2.01m)
- Family Bathroom

### OUTSIDE

- Front and Rear Gardens
- Car Port and Driveway

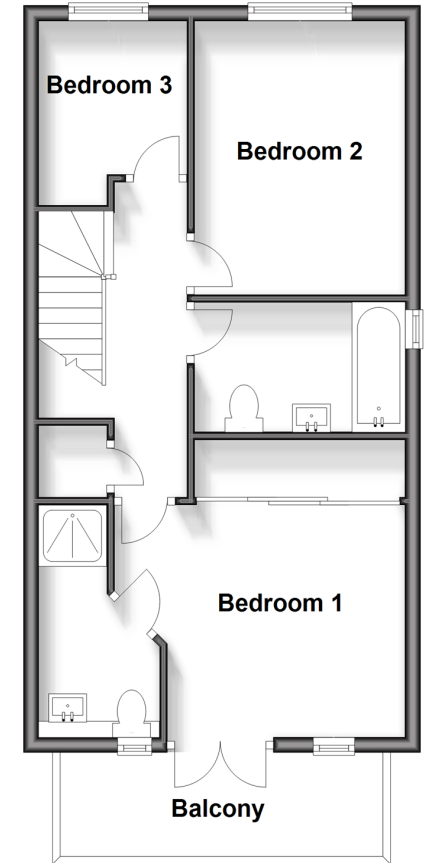
### Ground Floor

Approx. 45.2 sq. metres (486.2 sq. feet)



### First Floor

Approx. 45.2 sq. metres (486.2 sq. feet)



**Call Snodland - 01634 245055 ■ [wardsokent.co.uk](http://wardsokent.co.uk)**

- Legal advice should be taken to verify fixtures/fittings, planning, alterations and/or lease details
- Appliances & services are untested, dimensions are approximate and floor plans are not to scale
- Through a Homewise Home For Life Plan people aged 60+ can secure this property for up to 59% less, by purchasing a Lifetime Lease.



13821611/20240913/CG/LK