



Price
£300,000

Freehold

2x  1x  2x 

**Queens Avenue,
Snodland, Kent, ME6**

OVER 60?

Secure this property
for up to **59% less!**

Wards
Helping you move forwards



Ground Floor
Approx. 41.9 sq. metres (451.3 sq. feet)

Main features

- Extremely charming home in the heart of Snodland village
- Well designed kitchen and handy utility area - perfect for families
- Independent upstairs family bathroom and downstairs cloakroom
- Enjoy cosy nights on the sofa in the gorgeous lounge
- Walking distance to local amenities

Accommodation

GROUND FLOOR

Entrance Hall

Lounge: 10'10 x 9'8 (3.30m x 2.95m)

Dining Room: 11'10 x 10'3 (3.61m x 3.13m)

Kitchen: 8'11 x 7'0 (2.72m x 2.14m)

Utility Area: 6'6 x 5'8 (1.98m x 1.73m)

Cloakroom

FIRST FLOOR

Landing

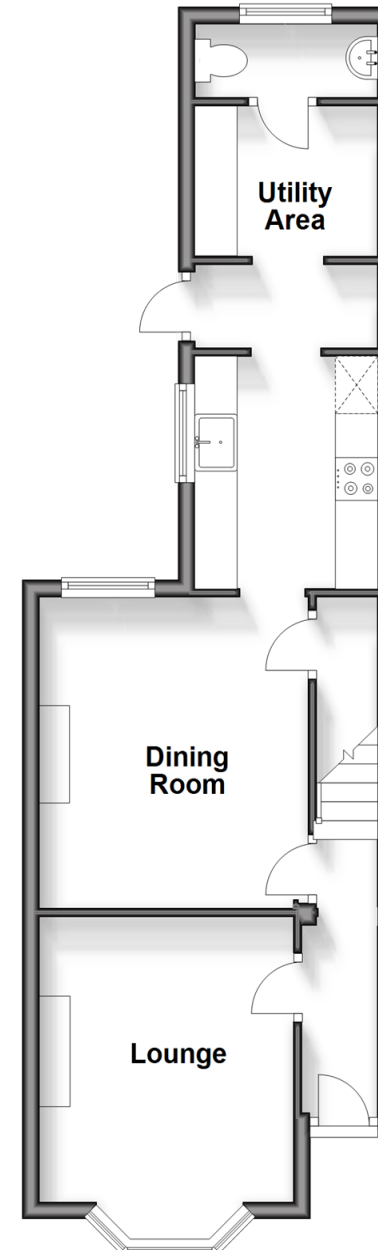
Bedroom 1: 13'0 x 10'10 (3.97m x 3.30m)

Bedroom 2: 11'11 x 8'2 (3.63m x 2.49m)

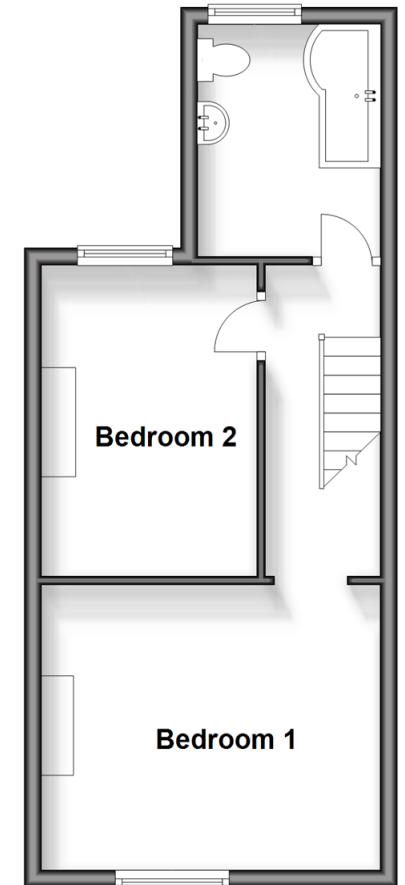
Bathroom

OUTSIDE

Front and Rear Gardens



First Floor
Approx. 34.5 sq. metres (371.1 sq. feet)



Call Snodland - 01634 245055 ■ wardsokent.co.uk

- Legal advice should be taken to verify fixtures/fittings, planning, alterations and/or lease details
- Appliances & services are untested, dimensions are approximate and floor plans are not to scale
- Through a Homewise Home For Life Plan people aged 60+ can secure this property for up to 59% less, by purchasing a Lifetime Lease.



13821547/20240816/MM/LK