



**Price**  
**£400,000**

**Freehold**

3x  1x  2x 

**Meadow Crescent,  
Upper Halling,  
Rochester, Kent, ME2**

**OVER 60?**

Secure this property  
for up to **59% less!**

*Wards*  
Helping you move forwards





## Main features

- Excellent size home in a gorgeous rural location with pretty views
- Great size bedrooms
- Ready to move straight into with no onward chain
- Gorgeous garden to enjoy with excellent entertaining space
- Amazing kitchen/diner which is perfect for family life

## Accommodation

### GROUND FLOOR

Entrance Hall

Lounge: 12'8 x 11'2 (3.86m x 3.41m)

Kitchen/Diner: 17'9 x 12'8 (5.41m x 3.86m)

Conservatory: 14'8 x 8'11 (4.47m x 2.72m)

### FIRST FLOOR

Landing

Bedroom 1: 12'9 x 11'3 (3.89m x 3.43m)

Bedroom 2: 12'10 x 8'6 (3.91m x 2.59m)

Bedroom 3: 8'11 x 7'6 (2.72m x 2.29m)

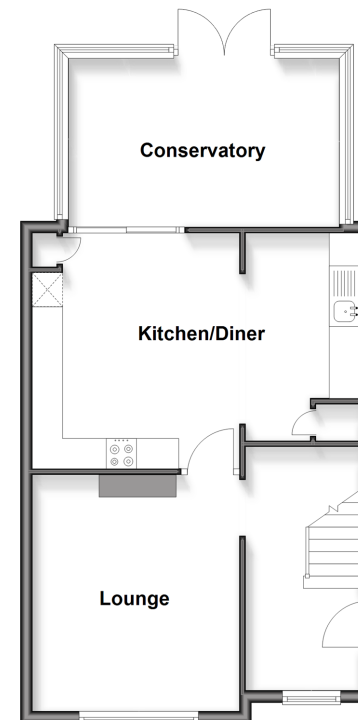
Family Bathroom

### OUTSIDE

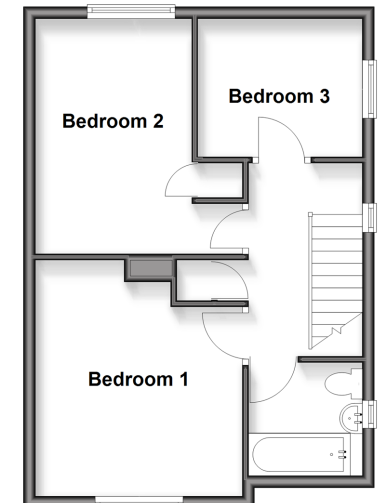
Front and Rear Gardens

Off Road Parking to Rear

**Ground Floor**  
Approx. 54.8 sq. metres (590.0 sq. feet)



**First Floor**  
Approx. 42.0 sq. metres (452.3 sq. feet)



**Call Snodland - 01634 245055 ■ [wardsofKent.co.uk](http://wardsofKent.co.uk)**

■ Legal advice should be taken to verify fixtures/fittings, planning, alterations and/or lease details  
■ Through a Homewise Home For Life Plan people aged 60+ can secure this property for up to 50% less, by purchasing a Lifetime Lease.

■ Appliances & services are untested, dimensions are approximate and floor plans are not to scale