



OVER 60?

Secure this property
for up to **59% less!**

Price

£280,000

Freehold

2x  1x  1x 

**Lucas Road, Snodland,
Kent, ME6**

Wards
Helping you move forwards



Main features

- Immaculately presented home in a quiet, desirable spot
- Handy allocated parking plus driveway to the front
- Lovely garden with rear access
- Excellent kitchen/breakfast room, perfect for family life
- Both bedrooms are doubles and this house is move in ready

Accommodation

GROUND FLOOR

Entrance Porch

Lounge: 15'10 x 11'11 (4.83m x 3.63m)

Kitchen/Breakfast Room: 11'10 x 8'9 (3.61m x 2.67m)

FIRST FLOOR

Landing

Bedroom 1: 11'11 x 8'10 (3.63m x 2.69m)

Bedroom 2: 11'11 x 7'6 (3.63m x 2.29m)

Bathroom: 8'10 x 4'6 (2.69m x 1.37m)

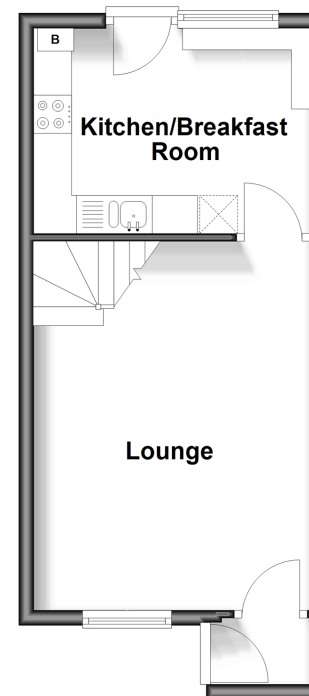
OUTSIDE

Rear Garden

Allocated Parking and Driveway

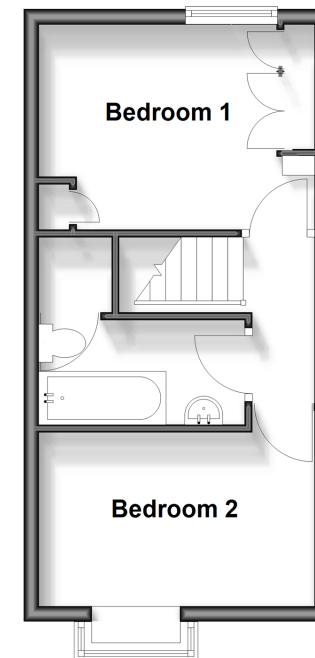
Ground Floor

Approx. 28.9 sq. metres (311.1 sq. feet)



First Floor

Approx. 28.1 sq. metres (302.0 sq. feet)



Call Snodland - 01634 245055 ■ wardsofKent.co.uk

■ Legal advice should be taken to verify fixtures/fittings, planning, alterations and/or lease details
 ■ Through a Homewise Home For Life Plan people aged 60+ can secure this property for up to 59% less, by purchasing a Lifetime Lease.

■ Appliances & services are untested, dimensions are approximate and floor plans are not to scale