



Price
£425,000

Freehold

3x  1x  2x 

**Dryland Road, Snodland,
Kent, ME6**

OVER 60?

Secure this property
for up to **59% less!**

Wards
Helping you move forwards



Main features

- Beautifully presented family home on a very desirable road
- Ample parking on your driveway, plus a garage too
- Stunning views of the Downs
- Extremely spacious throughout with great size bedrooms
- Perfect entertaining space and a lovely kitchen/breakfast room

Accommodation

GROUND FLOOR

Hallway
Cloakroom
Lounge : 12'9 x 11'3 (3.89m x 3.43m)
Dining Area: 11'7 x 9'11 (3.53m x 3.02m)
Kitchen/Breakfast Room: 16'11 x 8'11 (5.16m x 2.72m)
Utility Room: 7'0 x 6'6 (2.14m x 1.98m)

FIRST FLOOR

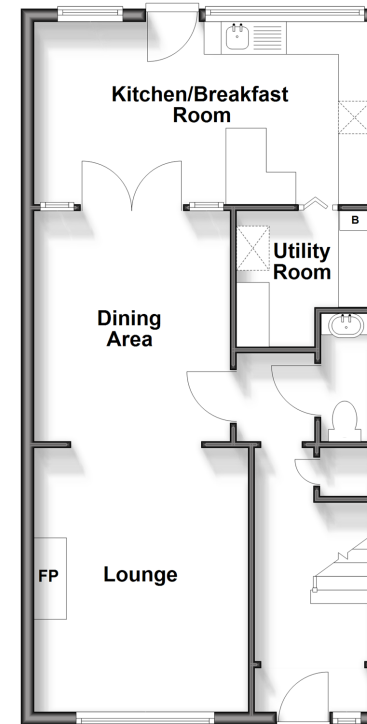
Landing
Bedroom 1: 11'7 x 9'4 up to fitted wardrobes (3.53m x 2.85m)
Bedroom 2: 12'3 x 9'1 (3.74m x 2.77m)
Bedroom 3: 9'8 x 7'11 (2.95m x 2.41m)
Bathroom

OUTSIDE

Front and Rear Gardens
Garage and Driveway

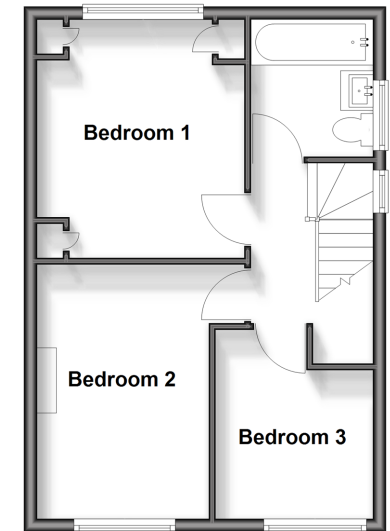
Ground Floor

Approx. 54.7 sq. metres (589.3 sq. feet)



First Floor

Approx. 39.6 sq. metres (426.4 sq. feet)



Call Snodland - 01634 245055 ■ wardsofKent.co.uk

■ Legal advice should be taken to verify fixtures/fittings, planning, alterations and/or lease details
■ Through a Homewise Home For Life Plan people aged 60+ can secure this property for up to 59% less, by purchasing a Lifetime Lease.

■ Appliances & services are untested, dimensions are approximate and floor plans are not to scale