



**Modern
Auction**

**£210,000
Leasehold**

2x  2x  1x 

**Lambe Close,
Holborough Lakes,
Snodland, Kent, ME6**

Wards
Helping you move forwards



Main features

- Chain free apartment in a desirable location and handy allocated parking
- Excellent size rooms throughout plus a balcony to enjoy all year round
- For sale by Modern Auction - T&C's apply
- Subject to an undisclosed Reserve Price
- Buyer's fees apply

Accommodation

FIRST FLOOR

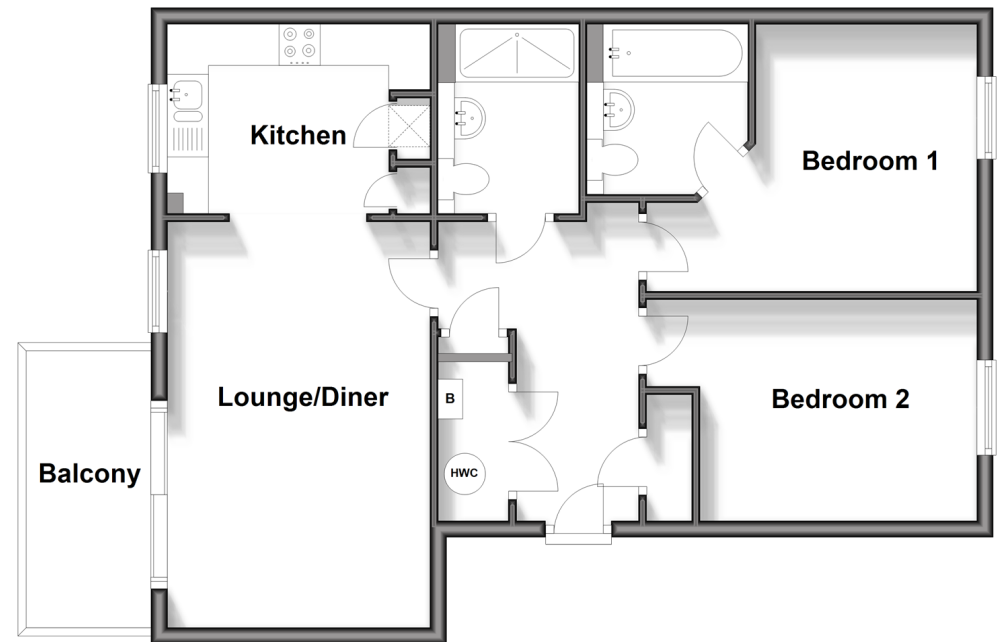
Entrance Hall
 Lounge/Diner: 16'2 x 12'3 (4.93m x 3.74m)
 Balcony
 Kitchen: 10'4 x 7'5 (3.15m x 2.26m)
 Bedroom 1: 10'7 x 9'1 (3.23m x 2.77m)
 En-Suite Bathroom
 Bedroom 2: 11'1 x 8'9 (3.38m x 2.67m)
 Shower Room

OUTSIDE

Allocated Parking Space

First Floor

Approx. 63.3 sq. metres (681.1 sq. feet)



Call Snodland - 01634 245055 ■ wardsofkennt.co.uk

■ Legal advice should be taken to verify fixtures/fittings, planning, alterations and/or lease details

■ Appliances & services are untested, dimensions are approximate and floor plans are not to scale