



Price
£375,000

Freehold

3x  2x  1x 

**Conveyor Drive, Halling,
Rochester, Kent, ME2**

Wards
Helping you move forwards



Main features

- **Fantastic size family home on the popular St Andrews Park development**
- **Allocated parking for 2 cars right outside your front door**
- **Handy cloakroom, bathroom and en-suite shower room**
- **Great size kitchen/diner - perfect for catching up with family**
- **Offered Chain Free**

Accommodation

GROUND FLOOR

Entrance Hall
Cloakroom
Kitchen/Diner: 13'6 x 9'6 (4.12m x 2.90m)
Lounge: 16'8 x 13'0 (5.08m x 3.97m)

FIRST FLOOR

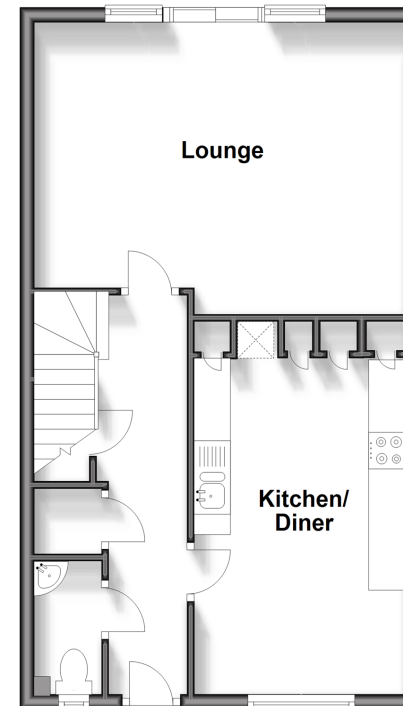
Landing
Bedroom 1: 13'0 x 9'6 (3.97m x 2.90m)
En-Suite Shower Room
Bedroom 2: 9'11 x 9'6 (3.02m x 2.90m)
Bedroom 3: 10'5 x 6'10 (3.18m x 2.08m)
Bathroom

OUTSIDE

Front and Rear Gardens
Allocated Parking Spaces x 2

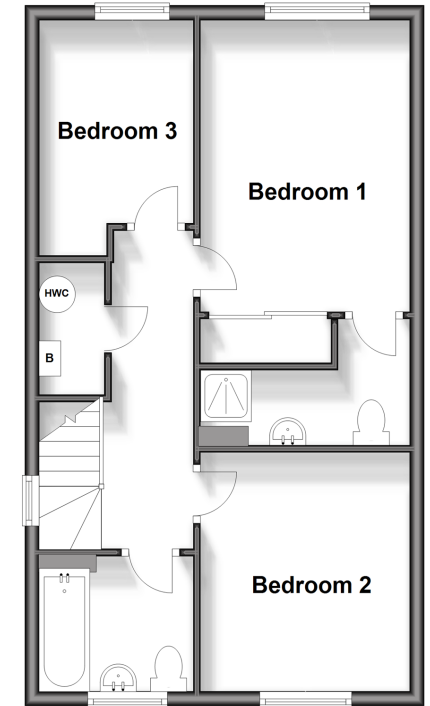
Ground Floor

Approx. 46.9 sq. metres (504.3 sq. feet)



First Floor

Approx. 46.9 sq. metres (504.3 sq. feet)



Call Snodland - 01634 245055 ■ wardsof Kent.co.uk

■ Legal advice should be taken to verify fixtures/fittings, planning, alterations and/or lease details

■ Appliances & services are untested, dimensions are approximate and floor plans are not to scale



13821722/20241202/CG/LK