



OVER 60?

Secure this property
for up to **59% less!**

Price

£375,000

Freehold

3x  2x  1x 

**Manley Boulevard,
Holborough Lakes,
Snodland, Kent, ME6**

Wards
Helping you move forwards



Main features

- Immaculate family home on the prestigious Holborough Lakes
- Pretty green views to the front
- Handy cloakroom, upstairs bathroom and en-suite shower room
- Excellent size garden which is perfect to enjoy all year round
- Ease of parking on your own driveway

Accommodation

GROUND FLOOR

Entrance Hall
Cloakroom
Kitchen: 9'5 x 8'8 (2.87m x 2.64m)
Lounge/Diner: 18'0 x 15'5 (5.49m x 4.70m)

FIRST FLOOR

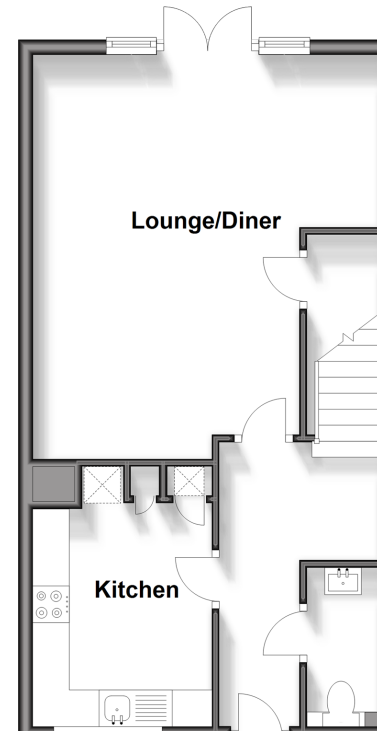
Landing
Bedroom 1: 10'3 x 9'3 (3.13m x 2.82m)
En-Suite Shower Room
Bedroom 2: 11'7 x 8'3 (3.53m x 2.52m)
Bedroom 3: 8'3 x 6'10 (2.52m x 2.08m)
Bathroom

OUTSIDE

Front and Rear Gardens
Driveway

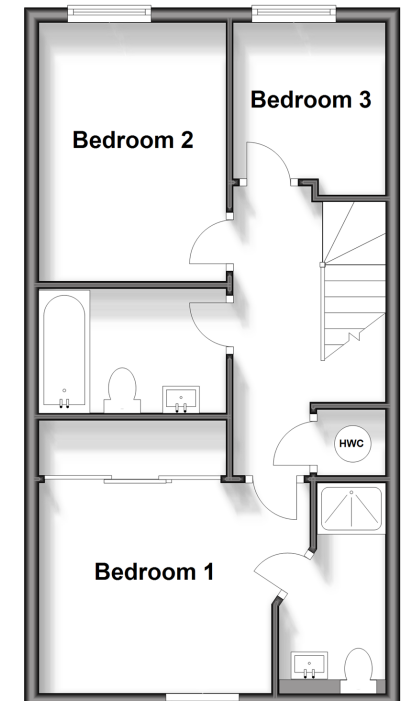
Ground Floor

Approx. 43.5 sq. metres (468.2 sq. feet)



First Floor

Approx. 43.5 sq. metres (468.2 sq. feet)



Call Snodland - 01634 245055 ■ wardsofKent.co.uk

■ Legal advice should be taken to verify fixtures/fittings, planning, alterations and/or lease details
■ Through a Homewise Home For Life Plan people aged 60+ can secure this property for up to 59% less, by purchasing a Lifetime Lease.

■ Appliances & services are untested, dimensions are approximate and floor plans are not to scale



13821725/20250222/CG/LK