



Price
£400,000

Freehold

3x  1x  1x 

**Howlsmere Close,
Halling, Rochester, Kent,
ME2**

OVER 60?

Secure this property
for up to **59% less!**

Wards
Helping you move forwards



Main features

- **Lovely presented home in the popular village of Halling**
- **Impressive riverside location**
- **Bright and airy throughout and ready to move straight into**
- **Handy garage and driveway**
- **With a downstairs cloakroom plus family bathroom, those queues in the morning are a thing of the past**

Accommodation

GROUND FLOOR

- Hallway
- Cloakroom
- Lounge: 15'0 x 11'10 (4.58m x 3.61m)
- Kitchen/Diner: 15'0 x 8'8 (4.58m x 2.64m)

FIRST FLOOR

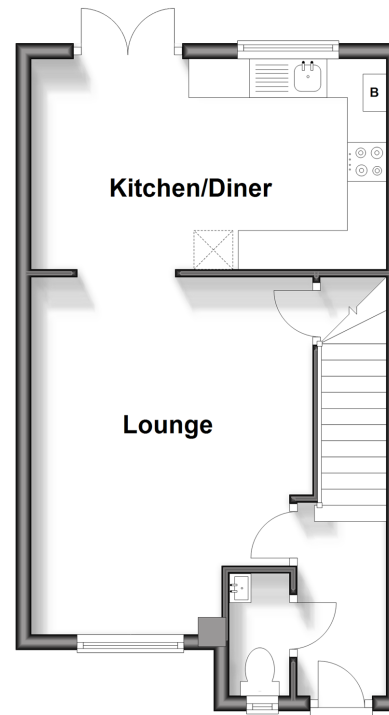
- Landing
- Bedroom 1: 13'10 x 8'9 (4.22m x 2.67m)
- Bedroom 2: 10'0 x 8'8 (3.05m x 2.64m)
- Bedroom 3: 8'9 x 6'4 (2.67m x 1.93m)
- Family Bathroom

OUTSIDE

- Front and Rear Gardens
- Garage and Driveway

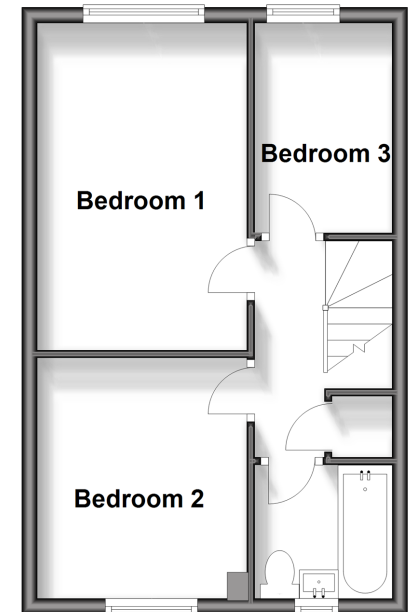
Ground Floor

Approx. 35.6 sq. metres (383.0 sq. feet)



First Floor

Approx. 34.0 sq. metres (365.8 sq. feet)



Call Snodland - 01634 245055 ■ wardsof Kent.co.uk

■ Legal advice should be taken to verify fixtures/fittings, planning, alterations and/or lease details
 ■ Through a Homewise Home For Life Plan people aged 60+ can secure this property for up to 59% less, by purchasing a Lifetime Lease.

■ Appliances & services are untested, dimensions are approximate and floor plans are not to scale



13821705/20241102/CG/LK