



Price
£270,000

Freehold

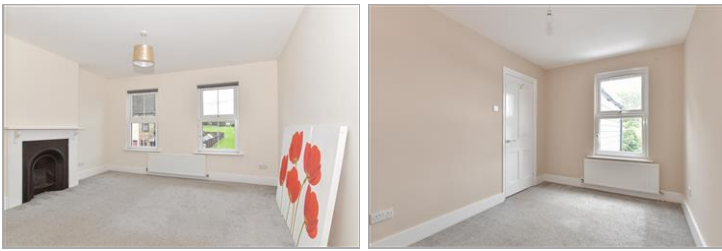
2x  1x  1x 

**Malling Road, Snodland,
Kent, ME6**

OVER 60?

Secure this property
for up to **59% less!**

Wards
Helping you move forwards



Main features

- Handy, stress free parking at the rear
- Everything at your doorstep and walking distance to train station
- Great size bedrooms and an independent bathroom
- Excellent entertaining space downstairs for family gatherings
- Chain free, so this house really could be yours sooner than you think!

Accommodation

GROUND FLOOR

Entrance Hall

Lounge: 11'11 x 9'9 (3.63m x 2.97m)

Kitchen/Diner: 22'6 x 12'8 maximum (6.86m x 3.86m)

FIRST FLOOR

Landing

Bedroom 1: 13'7 x 12'3 (4.14m x 3.74m)

Bedroom 2: 12'10 x 8'0 (3.91m x 2.44m)

Bathroom

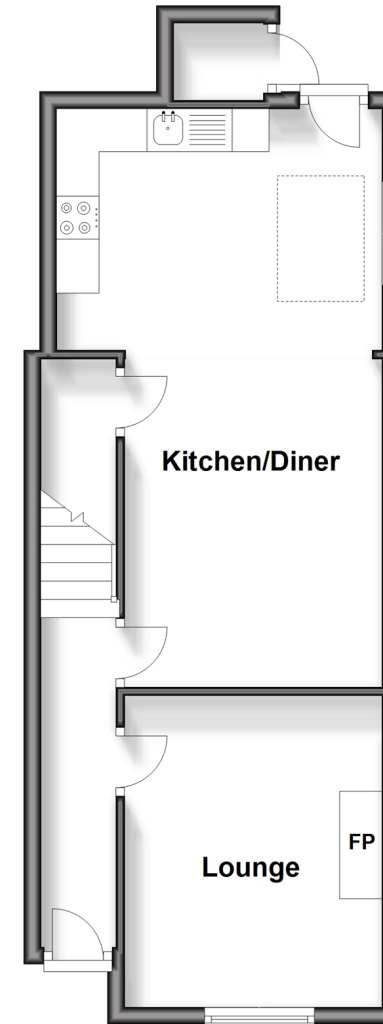
OUTSIDE

Rear Garden

Off Road Parking to Rear

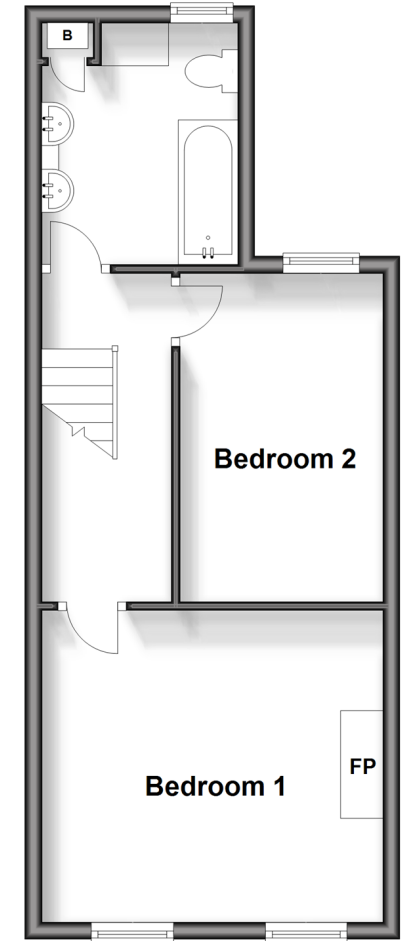
Ground Floor

Approx. 41.7 sq. metres (449.4 sq. feet)



First Floor

Approx. 37.0 sq. metres (397.7 sq. feet)



Call Snodland - 01634 245055 ■ wardsokent.co.uk

- Legal advice should be taken to verify fixtures/fittings, planning, alterations and/or lease details
- Appliances & services are untested, dimensions are approximate and floor plans are not to scale
- Through a Homewise Home For Life Plan people aged 60+ can secure this property for up to 59% less, by purchasing a Lifetime Lease.



13821647/20241012/CG/MM