



**Price**  
**£400,000**

**Freehold**

4x  2x  1x 

**Manley Boulevard,  
Snodland, Kent, ME6**

**OVER 60?**

Secure this property  
for up to **59% less!**

*Wards*  
Helping you move forwards



## Main features

- **Stunning and extremely versatile family home on Holborough Lakes**
- **Handy garage, driveway and allocated parking space**
- **Beautiful green views to the front**
- **Excellent entertaining space in the gorgeous kitchen/diner**
- **Amazing travel links close by**

## Accommodation

### GROUND FLOOR

Entrance Hall  
 Utility Room: 7'1 x 6'0 (2.16m x 1.83m)  
 Cloakroom  
 Kitchen/Diner: 27'3 x 12'1 (8.31m x 3.69m)

### FIRST FLOOR

Landing  
 Lounge/Bedroom 4: 12'2 x 12'0 (3.71m x 3.66m)  
 Balcony  
 Bedroom 3: 12'1 x 9'10 (3.69m x 3.00m)  
 Family Bathroom

### SECOND FLOOR

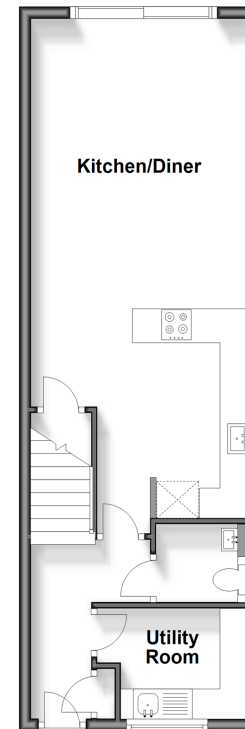
Landing  
 Bedroom 2: 12'1 x 9'6 (3.69m x 2.90m)  
 Bedroom 1: 10'1 x 9'11 (3.08m x 3.02m)  
 En-Suite Shower Room

### OUTSIDE

Garage en-bloc  
 Allocated Parking Space  
 Driveway  
 Rear Garden

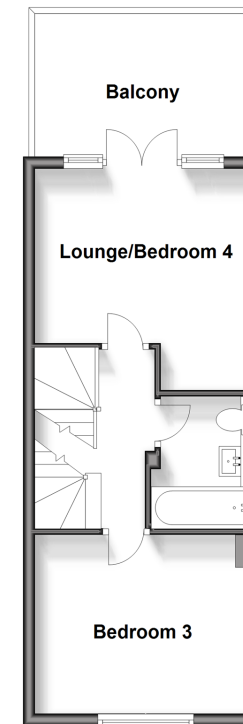
### Ground Floor

Approx. 43.3 sq. metres (466.1 sq. feet)



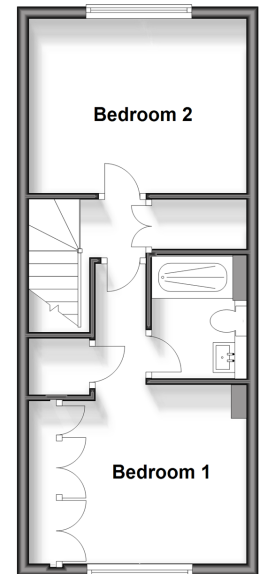
### First Floor

Approx. 33.7 sq. metres (362.5 sq. feet)



### Second Floor

Approx. 33.7 sq. metres (363.1 sq. feet)



**Call Snodland - 01634 245055 ■ [wardsof Kent.co.uk](http://wardsof Kent.co.uk)**

■ Legal advice should be taken to verify fixtures/fittings, planning, alterations and/or lease details  
 ■ Through a Homewise Home For Life Plan people aged 60+ can secure this property for up to 59% less, by purchasing a Lifetime Lease.

■ Appliances & services are untested, dimensions are approximate and floor plans are not to scale



13820870/20240921/CG/LK