



Price
£300,000

Freehold

2x  1x  2x 

**Queens Avenue,
Snodland, Kent, ME6**

OVER 60?

Secure this property
for up to **59% less!**

Wards
Helping you move forwards



Main features

- Truly exquisite period home in the quiet village of Snodland
- Offered chain free
- Shabby chic kitchen which offers you all the space you need
- Fantastic open plan living which is perfect for entertaining friends
- Great size bedrooms plus and independent upstairs bathroom

Accommodation

GROUND FLOOR

Entrance Porch

Lounge: 13'1 x 13'1 (3.99m x 3.99m)

Dining Room: 11'10 x 10'5 (3.61m x 3.18m)

Kitchen: 12'5 x 7'5 (3.79m x 2.26m)

FIRST FLOOR

Landing

Bedroom 1: 13'0 x 11'8 (3.97m x 3.56m)

Bedroom 2: 11'10 x 8'4 (3.61m x 2.54m)

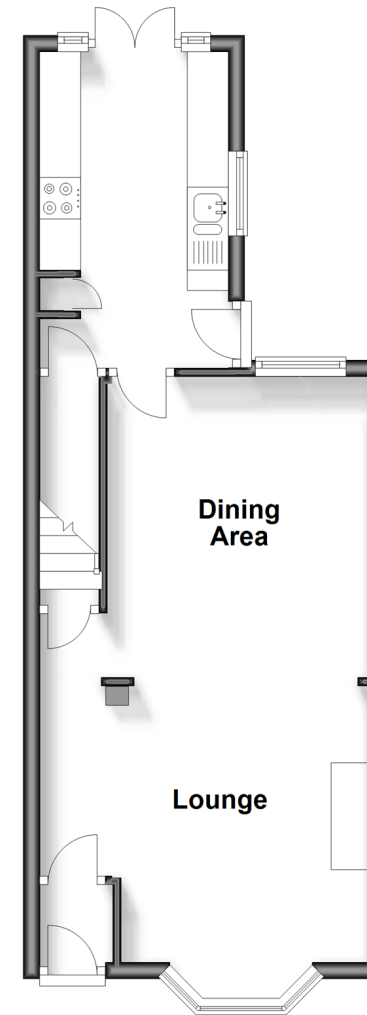
Bathroom

OUTSIDE

Front and Rear Gardens

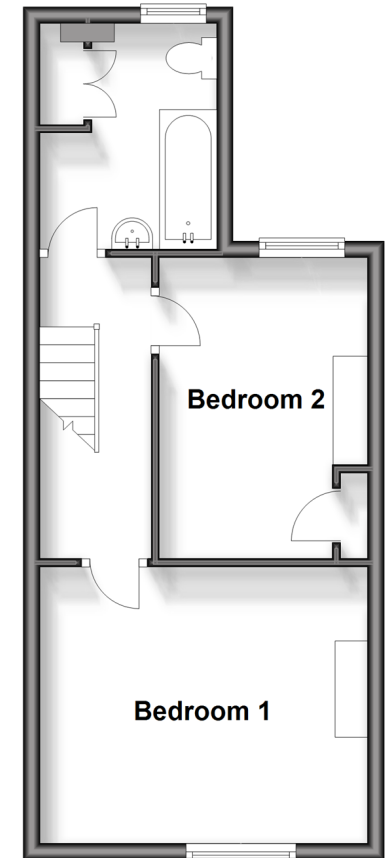
Ground Floor

Approx. 37.5 sq. metres (403.4 sq. feet)



First Floor

Approx. 34.5 sq. metres (371.1 sq. feet)



Call Snodland - 01634 245055 ■ wardsof Kent.co.uk

- Legal advice should be taken to verify fixtures/fittings, planning, alterations and/or lease details
- Appliances & services are untested, dimensions are approximate and floor plans are not to scale
- Through a Homewise Home For Life Plan people aged 60+ can secure this property for up to 59% less, by purchasing a Lifetime Lease.



13821690/20240907/CG/LK