



Price
£260,000

Freehold

2x  1x  1x 

Church Field, Snodland,
Kent, ME6

OVER 60?

Secure this property
for up to **59% less!**

Wards
Helping you move forwards



Main features

- Great entertaining space in the open plan lounge/diner
- Cosy home in a peaceful location
- Well looked after with the opportunity to add your own stamp
- Walking distance to all amenities
- Fantastic travel links nearby and all you could need on your door step

Accommodation

GROUND FLOOR

Lounge/Diner: 22'5 x 12'0 (6.84m x 3.66m)

Kitchen: 10'4 x 10'3 (3.15m x 3.13m)

FIRST FLOOR

Landing

Bedroom 1 : 11'10 x 10'11 (3.61m x 3.33m)

Bedroom 2 : 10'0 11 x 6'5 (3.05m x 1.96m)

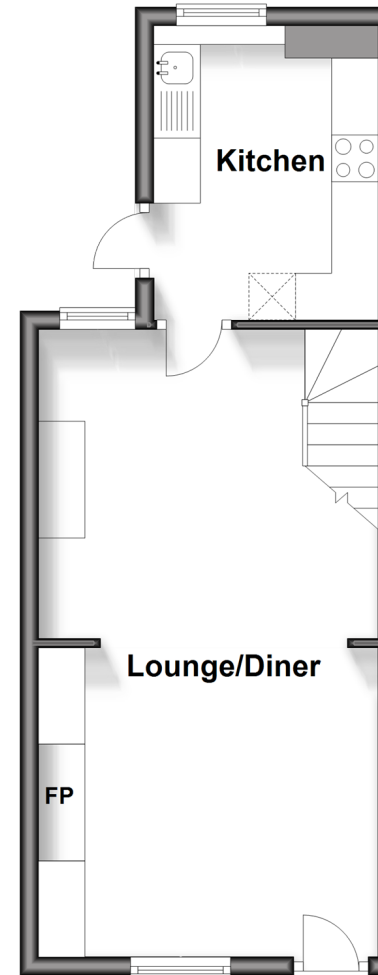
Bathroom

OUTSIDE

Front and Rear Gardens

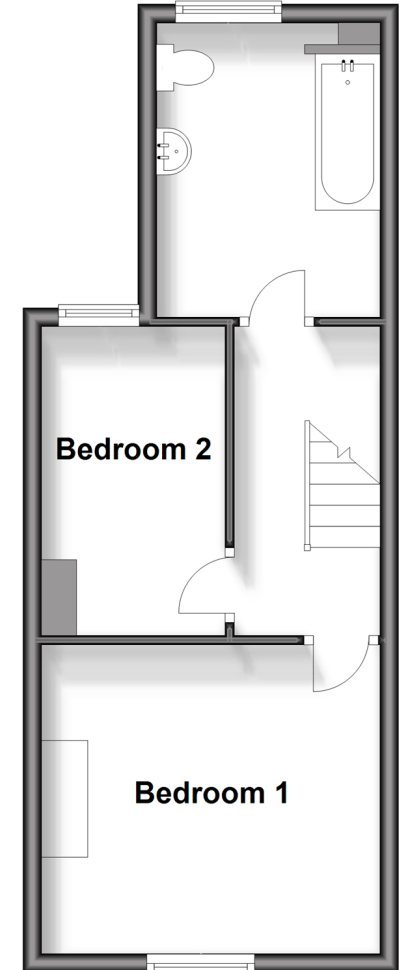
Ground Floor

Approx. 32.4 sq. metres (348.3 sq. feet)



First Floor

Approx. 32.5 sq. metres (349.5 sq. feet)



Call Snodland - 01634 245055 ■ wardsof Kent.co.uk

- Legal advice should be taken to verify fixtures/fittings, planning, alterations and/or lease details
- Appliances & services are untested, dimensions are approximate and floor plans are not to scale
- Through a Homewise Home For Life Plan people aged 60+ can secure this property for up to 59% less, by purchasing a Lifetime Lease.



13821675/20240807/CG/MM